

# TGN46 antibody

**Cat. No. GTX74290**

<b>Host</b>	Sheep
<b>Clonality</b>	Polyclonal
<b>Isotype</b>	IgG
<b>Applications</b>	WB, ICC/IF, IHC-Fr
<b>Reactivity</b>	Human

References ( 14 )

Package

50 µl

## Applications

### Application Note

\*Optimal dilutions/concentrations should be determined by the researcher.

Suggested dilution	Recommended dilution
WB	1/500-1/1,000
ICC/IF	Assay dependent
IHC-Fr	1/50-1/100

**Note : Fixation with 3% paraformaldehyde or methanol/acetone is recommended.**

Not tested in other applications.

**Calculated MW** 51 kDa. ( [Note](#) )

## Properties

<b>Form</b>	Liquid
<b>Buffer</b>	PBS, 1% BSA, 25% Glycerol
<b>Preservative</b>	0.02% Sodium azide
<b>Storage</b>	Store as concentrated solution. Centrifuge briefly prior to opening vial. For short-term storage (1-2 weeks), store at 4°C. For long-term storage, aliquot and store at -20°C or below. Avoid multiple freeze-thaw cycles.
<b>Immunogen</b>	Recombinant human TGN46.
<b>Purification</b>	Serum
<b>Conjugation</b>	Unconjugated

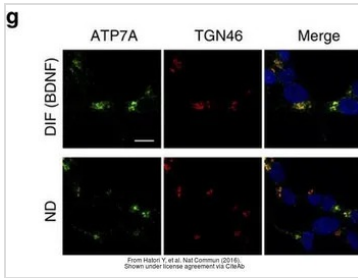
### Note

For laboratory research use only. Not for any clinical, therapeutic, or diagnostic use in humans or animals. Not for animal or human consumption.

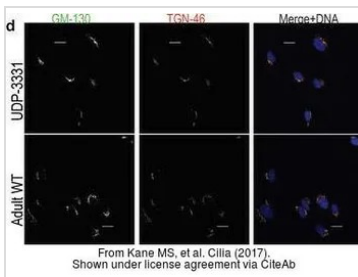
Purchasers shall not, and agree not to enable third parties to, analyze, copy, reverse engineer or otherwise attempt to determine the structure or sequence of the product.



For full product information, images and publications, please visit our [website](#).

**DATA IMAGES**

**GTx74290 ICC/IF Image**

The data was published in the journal Nat Commun in 2016. [PMID: 26879543](https://pubmed.ncbi.nlm.nih.gov/26879543/)


**GTx74290 ICC/IF Image**

The data was published in the journal Cilia in 2017. [PMID: 28344780](https://pubmed.ncbi.nlm.nih.gov/28344780/)



For full product information, images and publications, please visit our [website](https://www.genetex.com).