

BAFF antibody

Cat. No. GTX74388

Host	Rabbit
Clonality	Polyclonal
Isotype	IgG
Applications	WB, ICC/IF
Reactivity	Human, Mouse, Rat

Package
100 µg

Applications

Application Note

*Optimal dilutions/concentrations should be determined by the researcher.

Suggested dilution	Recommended dilution
WB	0.25-1µg/ml
ICC/IF	1µg/ml

Note : This antibody detects a band of approximately 31kDa in mouse spleen tissue lysate and human HL60 cell lysate.

Not tested in other applications.

Calculated MW 31 kDa. ([Note](#))

Properties

Form	Liquid
Buffer	PBS
Preservative	0.02% Sodium azide
Storage	Store as concentrated solution. Centrifuge briefly prior to opening vial. For short-term storage (1-2 weeks), store at 4°C. For long-term storage, aliquot and store at -20°C or below. Avoid multiple freeze-thaw cycles.
Concentration	0.5 mg/ml (Please refer to the vial label for the specific concentration.)
Immunogen	Peptide corresponding to amino acids 254-269 of human CD257 (BAFF).
Purification	Purified by ion exchange chromatography
Conjugation	Unconjugated

Note

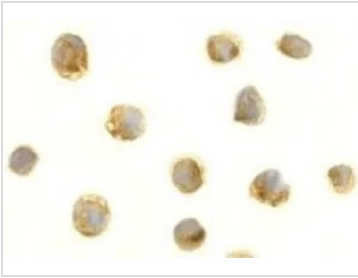
For laboratory research use only. Not for any clinical, therapeutic, or diagnostic use in humans or animals. Not for animal or human consumption.

Purchasers shall not, and agree not to enable third parties to, analyze, copy, reverse engineer or otherwise attempt to determine the structure or sequence of the product.

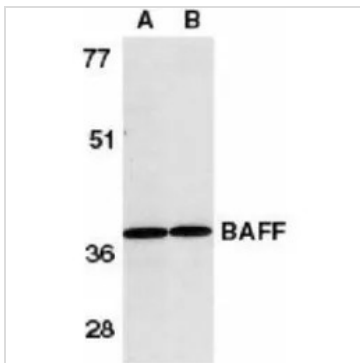


For full product information, images and publications, please visit our [website](#).

DATA IMAGES

**GTX74388 ICC/IF Image**

ICC/IF analysis of HL-60 cells using GTX74388 BAFF antibody.

**GTX74388 WB Image**

WB analysis of (A) HL-60 cell and (B) mouse spleen tissue lysate using GTX74388 BAFF antibody



For full product information, images and publications, please visit our [website](#).