

CSK antibody

Cat. No. GTX74502

Host	Goat
Clonality	Polyclonal
Isotype	IgG
Applications	WB, IHC-P, ELISA
Reactivity	Human, Mouse, Rat

Package
50 µg

Applications

Application Note

*Optimal dilutions/concentrations should be determined by the researcher.

Suggested dilution	Recommended dilution
WB	0.5-2µg/ml
IHC-P	0.1-0.3µg/ml
ELISA	>1/32,000

Note : This product requires antigen retrieval using heat treatment prior to staining of paraffin sections. TRIS/EDTA buffer pH 9.0 is recommended for this purpose.

Not tested in other applications.

Calculated MW	51 kDa. (Note)
Product Note	This antibody recognizes an epitope within the C-terminal region of CSK (c-src tyrosine kinase).

Properties

Form	Liquid
Buffer	TBS, 0.5% BSA
Preservative	0.02% Sodium azide
Storage	Store as concentrated solution. Centrifuge briefly prior to opening vial. For short-term storage (1-2 weeks), store at 4°C. For long-term storage, aliquot and store at -20°C or below. Avoid multiple freeze-thaw cycles.
Concentration	0.5 mg/ml (Please refer to the vial label for the specific concentration.)
Immunogen	Peptide sequence EQLEHIKTHELHL corresponding to the C-terminal region of CSK (NP_004374.1).
Purification	Purified by affinity chromatography
Conjugation	Unconjugated

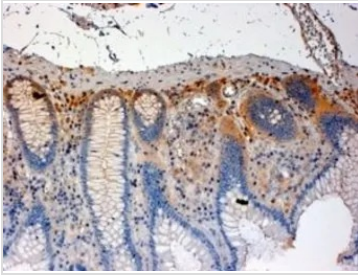


For full product information, images and publications, please visit our [website](#).

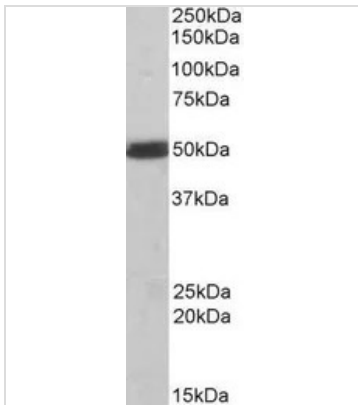
For laboratory research use only. Not for any clinical, therapeutic, or diagnostic use in humans or animals. Not for animal or human consumption.

Note

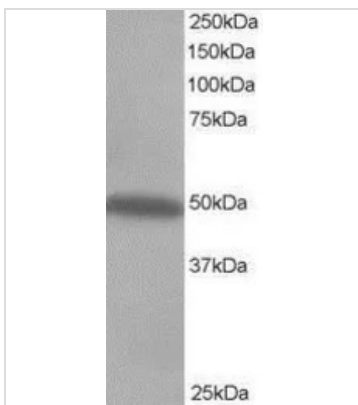
Purchasers shall not, and agree not to enable third parties to, analyze, copy, reverse engineer or otherwise attempt to determine the structure or sequence of the product.

DATA IMAGES

GTx74502 IHC-P Image

IHC-P analysis of human colon tissue using GTx74502 CSK antibody. Antigen retrieval using citrate buffer at pH6.0.


GTx74502 WB Image

WB analysis of mouse spleen tissue lysate using GTx74502 CSK antibody at 1 µg/ml


GTx74502 WB Image

WB analysis of Jurkat cell lysate using GTx74502 CSK antibody at 0.5µg/ml



For full product information, images and publications, please visit our [website](#).