

CD44 antibody [5035-41.1D] (FITC)

Cat. No. GTX74574

Host	Mouse
Clonality	Monoclonal
Isotype	IgG1
Applications	FCM
Reactivity	Mouse

Package
100 µg

Applications

Application Note

*Optimal dilutions/concentrations should be determined by the researcher.

Suggested dilution	Recommended dilution
FCM	1/10-1/50

Note : Use 10µl of the suggested working dilution to label 10⁶ cells or 100µl whole blood.

Not tested in other applications.

Product Note

This antibody recognizes the following strains of mice: C57BL/6, C57BL/10, C57/L, C58A, AKR, 129, SJL, NZB, C3H, CE, CBA/H.

Properties

Form	Liquid
Buffer	PBS, 1% BSA
Preservative	0.09% Sodium azide
Storage	Store as concentrated solution. Centrifuge briefly prior to opening vial. For short-term storage (1-2 weeks), store at 4°C. For long-term storage, aliquot and store at -20°C or below. Avoid multiple freeze-thaw cycles. Protect from light.
Concentration	0.5 mg/ml (Please refer to the vial label for the specific concentration.)
Immunogen	Spleen cells from B6PL-Ly-2a / Ly-3a B6-Ly-1a mice
Purification	Protein G purified From tissue culture supernatant
Conjugation	Fluorescein isothiocyanate (FITC) Wavelength

Note

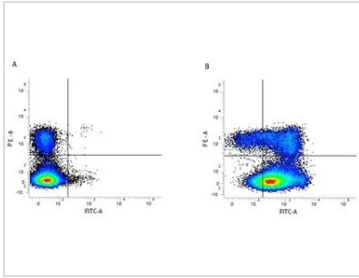
For laboratory research use only. Not for any clinical, therapeutic, or diagnostic use in humans or animals. Not for animal or human consumption.

Purchasers shall not, and agree not to enable third parties to, analyze, copy, reverse engineer or otherwise attempt to determine the structure or sequence of the product.



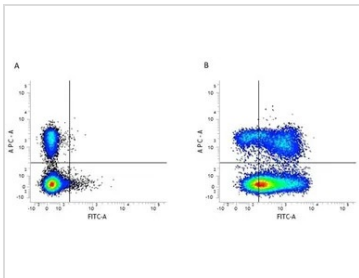
For full product information, images and publications, please visit our [website](#).

DATA IMAGES



GTX74574 FCM Image

Figure A. RPE conjugated rat anti mouse CD3 (GTX43115) and FITC conjugated mouse IgG1 isotype control (GTX74750). Figure B. RPE conjugated rat anti mouse CD3 (GTX43115) and FITC conjugated mouse anti mouse CD44 (GTX74574). All experiments performed on red cell lysed murine splenocytes gated on lymphocytes



GTX74574 FCM Image

Figure A. APC conjugated rat anti mouse CD3 (500APC) and FITC conjugated mouse IgG1 isotype control. Figure B. APC conjugated rat anti mouse CD3 and FITC conjugated mouse anti mouse CD44. All experiments performed on murine splenocytes



For full product information, images and publications, please visit our [website](https://www.genetex.com).