

CD48 antibody [MEM-102] (PE)

Cat. No. GTX74614

Host	Mouse
Clonality	Monoclonal
Isotype	IgG1
Application	FACS
Reactivity	Human, Rhesus Monkey

Package
100 test

APPLICATION

Application Note

*Optimal dilutions/concentrations should be determined by the researcher.

Suggested dilution	Recommended dilution
FACS	Neat

Note : Use 10 μ l of the suggested working dilution to label 10⁶ cells in 100 μ l.

Not tested in other applications.

Calculated MW 28 kDa. ([Note](#))

PROPERTIES

Form	Liquid
Buffer	PBS, 1% BSA
Preservative	0.09% Sodium azide
Storage	Store as concentrated solution. Centrifuge briefly prior to opening vial. Store at 4°C. DO NOT FREEZE. Protect from light.
Concentration	Batch dependent (Please refer to the vial label for the specific concentration.)
Purification	Protein A purified
Conjugation	Phycoerythrin (PE)

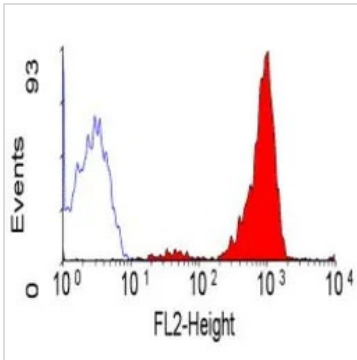
Note

For laboratory research use only. Not for any clinical, therapeutic, or diagnostic use in humans or animals. Not for animal or human consumption.

Purchasers shall not, and agree not to enable third parties to, analyze, copy, reverse engineer or otherwise attempt to determine the structure or sequence of the product.



For full product information, images and publications, please visit our [website](#).

DATA IMAGES

GTX74614 FACS Image

FACS analysis of human peripheral blood lymphocytes using GTX74614 CD48 antibody [MEM-102] (PE).



For full product information, images and publications, please visit our [website](#).