

## CD59 antibody [MEM-43] (Biotin)

**Cat. No. GTX74616**

<b>Host</b>	Mouse
<b>Clonality</b>	Monoclonal
<b>Isotype</b>	IgG2a
<b>Applications</b>	IHC-P, FCM, IP
<b>Reactivity</b>	Human

References ( 1 )

Package

100 µg

## Applications

**Application Note**

\*Optimal dilutions/concentrations should be determined by the researcher.

Suggested dilution	Recommended dilution
IHC-P	Assay dependent
FCM	Assay dependent
IP	Assay dependent

Not tested in other applications.

**Product Note**

This antibody reacts with well defined epitope (W40, R-53) on CD59 (Protectin). This antibody does not compete with MEM-43/5.

## Properties

<b>Form</b>	Liquid
<b>Buffer</b>	PBS
<b>Preservative</b>	15mM Sodium azide
<b>Storage</b>	Store as concentrated solution. Centrifuge briefly prior to opening vial. Store at 4°C. DO NOT FREEZE.
<b>Concentration</b>	1 mg/ml (Please refer to the vial label for the specific concentration.)
<b>Immunogen</b>	Thymocytes and T lymphocytes
<b>Purification</b>	Purified IgG
<b>Conjugation</b>	Biotin The reagent is free of unconjugated biotin.

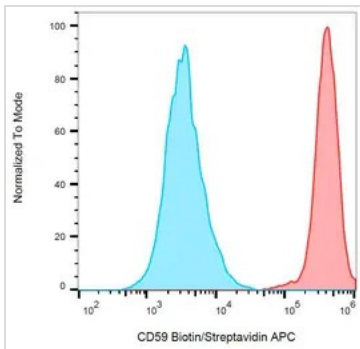
**Note**

For laboratory research use only. Not for any clinical, therapeutic, or diagnostic use in humans or animals. Not for animal or human consumption.

Purchasers shall not, and agree not to enable third parties to, analyze, copy, reverse engineer or otherwise attempt to determine the structure or sequence of the product.

For full product information, images and publications, please visit our [website](#).

## DATA IMAGES

**GTX74616 FCM Image**

FACS analysis of HL-60 (positive) and SP2 (negative) cells using GTX74616 CD59 antibody [MEM-43] (Biotin).



For full product information, images and publications, please visit our [website](#).