

CD32 antibody [AT10] (PE)

Cat. No. GTX74627

Host	Mouse
Clonality	Monoclonal
Isotype	IgG1
Application	FACS
Reactivity	Human, Dog, Pig, Rhesus Monkey

Reference (4)
Package
100 test

APPLICATION

Application Note

*Optimal dilutions/concentrations should be determined by the researcher.

Suggested dilution	Recommended dilution
FACS	Neat

Note : Use 10µl of the suggested working dilution to label 10⁶ cells or 100µl whole blood.

Not tested in other applications.

PROPERTIES

Form	Liquid
Buffer	PBS, 1% BSA
Preservative	0.09% Sodium azide
Storage	Store as concentrated solution. Centrifuge briefly prior to opening vial. Store at 4°C. DO NOT FREEZE. Protect from light.
Concentration	Batch dependent (Please refer to the vial label for the specific concentration.)
Immunogen	K562 cell line.
Purification	Protein A purified
Conjugation	Phycoerythrin (PE)

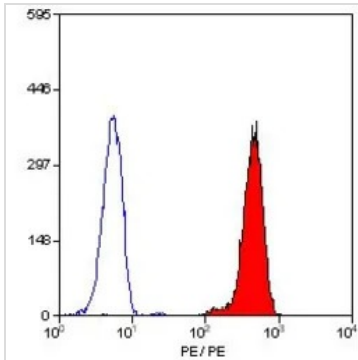
Note

For laboratory research use only. Not for any clinical, therapeutic, or diagnostic use in humans or animals. Not for animal or human consumption.

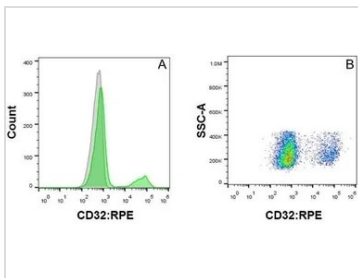
Purchasers shall not, and agree not to enable third parties to, analyze, copy, reverse engineer or otherwise attempt to determine the structure or sequence of the product.



For full product information, images and publications, please visit our [website](#).

DATA IMAGES

GTX74627 FACS Image

FACS analysis of human peripheral blood granulocytes using GTX74627 CD32 antibody [AT10] (PE).


GTX74627 FACS Image

Detection of CD32 in normal human peripheral blood cells using 10 μ L Mouse anti Human CD32:RPE antibody (GTX74627). Lymphocyte were gated for analysis (A): Histogram overlay with stained cells represented in green and unstained control cells in grey. (B): Density plot of CD32 cells.



For full product information, images and publications, please visit our [website](https://www.genetex.com).