

## CD8 alpha antibody [YTS105.18]

Cat. No. GTX74642

Host	Rat
Clonality	Monoclonal
Isotype	IgG2a
Applications	ICC/IF, IHC-Fr, FCM
Reactivity	Mouse

References ( 1 )

Package

250 µg

## Applications

## Application Note

\*Optimal dilutions/concentrations should be determined by the researcher.

Suggested dilution	Recommended dilution
ICC/IF	Assay dependent
IHC-Fr	Assay dependent
FCM	1/50-1/100

**Note : Use 10µl of the suggested working dilution to label 10<sup>6</sup> cells in 100µl.**

Not tested in other applications.

**Product Note** This antibody recognizes a non polymorphic epitope on the mouse CD8 alpha chain.

## Properties

Form	Liquid
Buffer	PBS
Preservative	0.09% Sodium azide
Storage	Store as concentrated solution. Centrifuge briefly prior to opening vial. For short-term storage (1-2 weeks), store at 4°C. For long-term storage, aliquot and store at -20°C or below. Avoid multiple freeze-thaw cycles.
Concentration	1 mg/ml (Please refer to the vial label for the specific concentration.)
Immunogen	Mouse spleen cells.
Purification	Protein G purified From tissue culture supernatant
Conjugation	Unconjugated

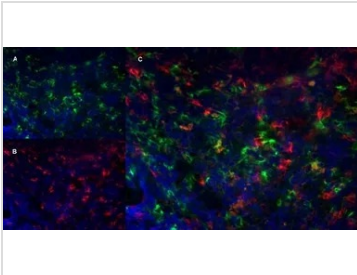


For full product information, images and publications, please visit our [website](#).

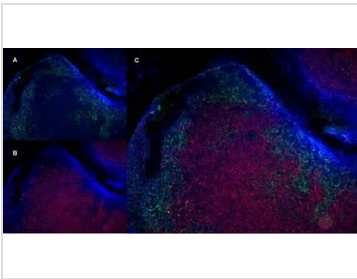
For laboratory research use only. Not for any clinical, therapeutic, or diagnostic use in humans or animals. Not for animal or human consumption.

**Note**

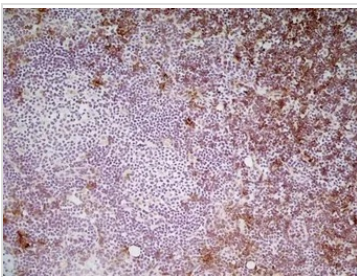
Purchasers shall not, and agree not to enable third parties to, analyze, copy, reverse engineer or otherwise attempt to determine the structure or sequence of the product.

**DATA IMAGES**

**GTX74642 IHC-Fr Image**

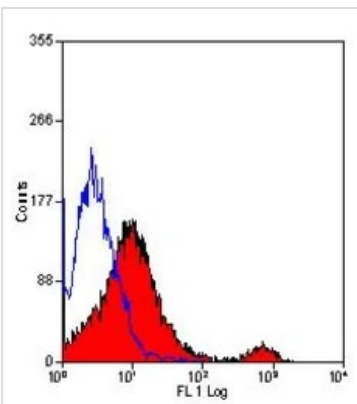
IHC-Fr analysis of mouse lymph node with Rat anti Mouse Ly-6B.2 antibody, clone 7/4 , green in A and Rat anti Mouse CD8 antibody, clone YTS105.18 (GTX74642), red in B. C is the merged image with nuclei counterstained blue using DAPI. High power


**GTX74642 IHC-Fr Image**

IHC-Fr analysis of a mouse lymph node with Rat anti mouse CD19, clone 6D5 (GTX75012), green in A and Rat anti Mouse CD8 (GTX74642), red in B. Merged image in C with nuclei counterstained blue using DAPI. Low power


**GTX74642 IHC-Fr Image**

IHC-Fr analysis of mouse lymph node tissue using GTX74642 CD8 alpha antibody [YTS105.18].


**GTX74642 FCM Image**

FACS analysis of mouse spleen cells using GTX74642 CD8 alpha antibody [YTS105.18].



For full product information, images and publications, please visit our [website](https://www.genetex.com).