

CD45RB antibody [MEM-55]

Cat. No. GTX74645

Host	Mouse
Clonality	Monoclonal
Isotype	IgG1
Applications	IHC-P, IHC-Fr, FCM, IP
Reactivity	Human, Monkey, Rhesus Monkey

References (1)

Package

200 µg

Applications

Application Note

*Optimal dilutions/concentrations should be determined by the researcher.

Suggested dilution	Recommended dilution
IHC-P	1/50-1/200
IHC-Fr	Assay dependent
FCM	1/50-1/100
IP	Assay dependent

Note : Use 10µl of the suggested working dilution to label 10⁶ cells in 100µl.

Not tested in other applications.

Product Note This antibody recognizes the isoform of CD45 encoded by exon B.

Properties

Form	Liquid
Buffer	PBS
Preservative	0.09% Sodium azide
Storage	Store as concentrated solution. Centrifuge briefly prior to opening vial. For short-term storage (1-2 weeks), store at 4°C. For long-term storage, aliquot and store at -20°C or below. Avoid multiple freeze-thaw cycles.
Concentration	1.0 mg/ml (Please refer to the vial label for the specific concentration.)
Purification	Protein A purified
Conjugation	Unconjugated

Note

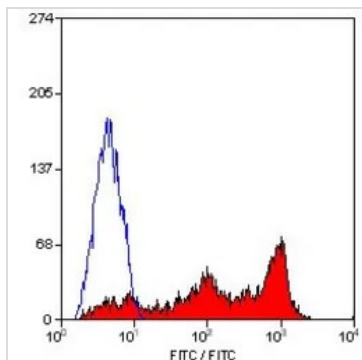
For laboratory research use only. Not for any clinical, therapeutic, or diagnostic use in humans or animals. Not for animal or human consumption.

Purchasers shall not, and agree not to enable third parties to, analyze, copy, reverse engineer or otherwise attempt to determine the structure or sequence of the product.



For full product information, images and publications, please visit our [website](#).

DATA IMAGES



GTX74645 FCM Image

FACS analysis of human peripheral blood lymphocytes using GTX74645 CD45RB antibody [MEM-55].



For full product information, images and publications, please visit our [website](#).