

CD40 antibody [3/23] (PE)

Cat. No. GTX74690

Host	Rat
Clonality	Monoclonal
Isotype	IgG2a
Applications	FCM
Reactivity	Mouse

Package
100 test

Applications

Application Note

*Optimal dilutions/concentrations should be determined by the researcher.

Suggested dilution	Recommended dilution
FCM	Neat

Note : Use 10µl of the suggested working dilution to label 10⁶ cells in 100µl.

Not tested in other applications.

Properties

Form	Liquid
Buffer	PBS, 1% BSA, 5% Sucrose
Preservative	0.09% Sodium azide
Storage	Store as concentrated solution. Centrifuge briefly prior to opening vial. Store at 4°C. DO NOT FREEZE. Protect from light.
Concentration	Batch dependent (Please refer to the vial label for the specific concentration.)
Immunogen	Extracellular Domain of Mouse CD40 and the Fc portion of Human IgG1.
Purification	Protein G purified From tissue culture supernatant
Conjugation	Phycoerythrin (PE) Wavelength

Note

For laboratory research use only. Not for any clinical, therapeutic, or diagnostic use in humans or animals. Not for animal or human consumption.

Purchasers shall not, and agree not to enable third parties to, analyze, copy, reverse engineer or otherwise attempt to determine the structure or sequence of the product.



For full product information, images and publications, please visit our [website](#).

DATA IMAGES

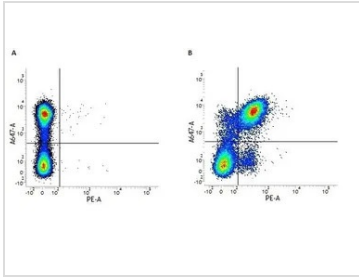
**GTX74690 FCM Image**

Figure A. A647 conjugated Rat anti Mouse CD45R and RPE conjugated Rat IgG2a isotype control (GTX74769). Figure B. A647 conjugated Rat anti Mouse CD45R and RPE conjugated Rat anti mouse CD40 (GTX74690). All experiments performed on mouse splenocytes.



For full product information, images and publications, please visit our [website](#).