

PI3 kinase p85 beta antibody [T15]

Cat. No. GTX74710

| | |
|---------------------|-----------------------|
| Host | Mouse |
| Clonality | Monoclonal |
| Isotype | IgG1 |
| Applications | WB, IHC-Fr, IP |
| Reactivity | Human, Bovine, Monkey |

Package
50 µg

Applications

Application Note

*Optimal dilutions/concentrations should be determined by the researcher.

| Suggested dilution | Recommended dilution |
|--------------------|----------------------|
| WB | 1/500-1/1,000 |
| IHC-Fr | Assay dependent |
| IP | 10µg/ml |

Not tested in other applications.

Calculated MW 81 kDa. ([Note](#))

Properties

| | |
|----------------------|--|
| Form | Liquid |
| Buffer | PBS |
| Preservative | 0.09% Sodium azide |
| Storage | Store as concentrated solution. Centrifuge briefly prior to opening vial. For short-term storage (1-2 weeks), store at 4°C. For long-term storage, aliquot and store at -20°C or below. Avoid multiple freeze-thaw cycles. |
| Concentration | 1.0 mg/ml (Please refer to the vial label for the specific concentration.) |
| Immunogen | Balculovirus expressed (Recombinant) p85 beta subunit of bovine PI-3 kinase. |
| Purification | Protein G purified From tissue culture supernatant |
| Conjugation | Unconjugated |

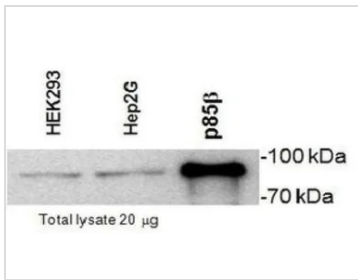
Note For laboratory research use only. Not for any clinical, therapeutic, or diagnostic use in humans or animals. Not for animal or human consumption.

Purchasers shall not, and agree not to enable third parties to, analyze, copy, reverse engineer or otherwise attempt to determine the structure or sequence of the product.



For full product information, images and publications, please visit our [website](#).

DATA IMAGES

**GTX74710 WB Image**

WB analysis of recombinant protein/HepG2/HEK293 using GTX74710 PI3K p85 beta antibody [T15].



For full product information, images and publications, please visit our [website](#).