

CD2 antibody [LT2] (PE)

Cat. No. GTX74726

Host	Mouse
Clonality	Monoclonal
Isotype	IgG2b
Application	IHC-Fr, FACS
Reactivity	Human

Reference (1)

Package

100 test

APPLICATION

Application Note

*Optimal dilutions/concentrations should be determined by the researcher.

Suggested dilution	Recommended dilution
IHC-Fr	Assay dependent
FACS	20 µl reagent / 100 µl of whole blood or 10 ⁶ cells in a suspension

Not tested in other applications.

Calculated MW 39 kDa. ([Note](#))

PROPERTIES

Form	Liquid
Buffer	PBS
Preservative	15mM Sodium azide
Storage	Store as concentrated solution. Centrifuge briefly prior to opening vial. Store at 4°C. DO NOT FREEZE. Protect from light.
Concentration	Batch dependent (Please refer to the vial label for the specific concentration.)
Immunogen	Normal human blood lymphocytes.
Purification	Purified by size-exclusion chromatography
Conjugation	Phycoerythrin (PE)

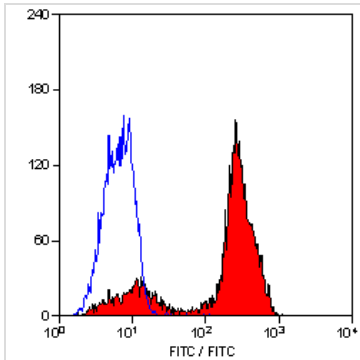
Note

For laboratory research use only. Not for any clinical, therapeutic, or diagnostic use in humans or animals. Not for animal or human consumption.

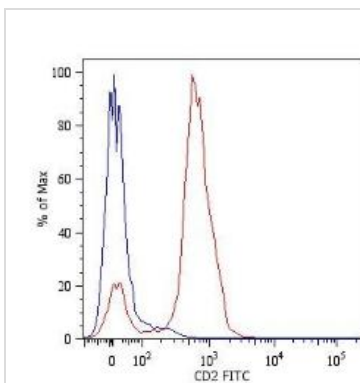
Purchasers shall not, and agree not to enable third parties to, analyze, copy, reverse engineer or otherwise attempt to determine the structure or sequence of the product.



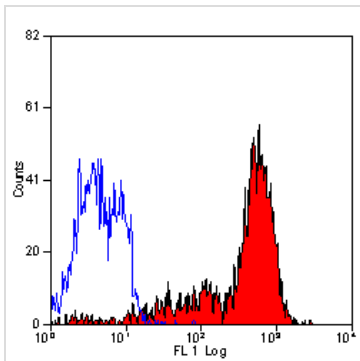
For full product information, images and publications, please visit our [website](#).

DATA IMAGES

GTX74726 FACS Image

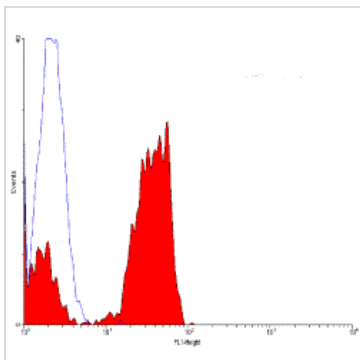
Staining of human peripheral blood lymphocytes with Mouse anti Human CD2 (GTX28360)


GTX74726 FACS Image

Surface staining of human peripheral blood cells with anti-human CD2: FITC (GTX74724). Cells in the lymphocyte gate were used for analysis.


GTX74726 FACS Image

Staining of human peripheral blood lymphocytes with Mouse anti Human CD2 (GTX28360)


GTX74726 FACS Image

Staining of human peripheral blood lymphocytes with Mouse anti Human CD2:FITC (GTX74724)



For full product information, images and publications, please visit our [website](https://www.genetex.com).