

CD21 antibody [LB21]

Cat. No. GTX74728

Host	Mouse
Clonality	Monoclonal
Isotype	IgG1
Applications	IHC-Fr, FCM, IP
Reactivity	Human, Goat, Sheep, Bovine, Cat, Mink

Package
200 test

Applications

Application Note

*Optimal dilutions/concentrations should be determined by the researcher.

Suggested dilution	Recommended dilution
IHC-Fr	1/10-1/100
FCM	Neat
IP	Assay dependent

Note : The epitope recognised by this antibody is reported to be sensitive to formaldehyde fixation and tissue processing. We recommends the use of acetone fixation for frozen sections.

Use 10µl of the suggested working dilution to label 10⁶ cells or 100µl whole blood.

Not tested in other applications.

Properties

Form	Liquid
Buffer	PBS, 1% BSA
Preservative	0.09% Sodium azide
Storage	Store as concentrated solution. Centrifuge briefly prior to opening vial. For short-term storage (1-2 weeks), store at 4°C. For long-term storage, aliquot and store at -20°C or below. Avoid multiple freeze-thaw cycles.
Concentration	25 µg/ml (Please refer to the vial label for the specific concentration.)
Immunogen	Human IM9 cell line.
Purification	Purified by ion exchange chromatography
Conjugation	Unconjugated

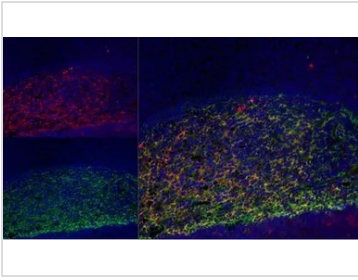
Note

For laboratory research use only. Not for any clinical, therapeutic, or diagnostic use in humans or animals. Not for animal or human consumption.

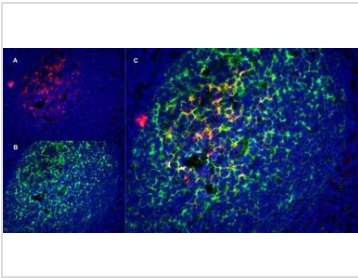
Purchasers shall not, and agree not to enable third parties to, analyze, copy, reverse engineer or otherwise attempt to determine the structure or sequence of the product.



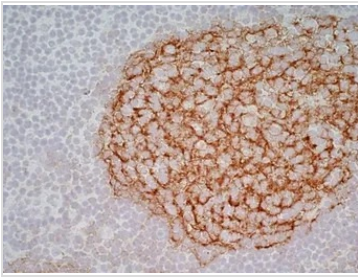
For full product information, images and publications, please visit our [website](#).

DATA IMAGES

GTx74728 IHC-Fr Image

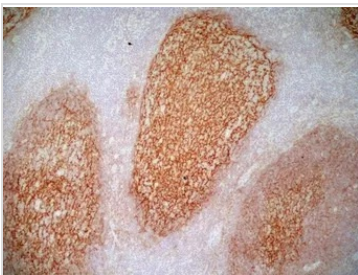
IHC-Fr image of human tonsil stained with Sheep anti Human LOX-1 antibody (GTx39812) in red and with Mouse anti Human CD21 antibody (GTx74728) in red. Nuclei are stained blue using DAPI. Merged image on right


GTx74728 IHC-Fr Image

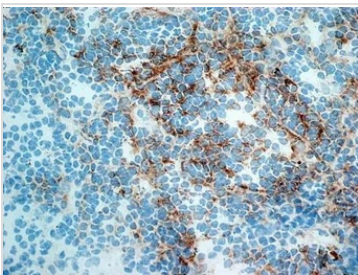
IHC-Fr staining of human tonsil using Mouse anti Human CD1a antibody, red in A and Mouse anti Human CD21 (GTx74728), green in B. C is the merged image with nuclei counterstained blue using DAPI. High power


GTx74728 IHC-Fr Image

IHC-Fr analysis of human tonsil tissue using GTx74728 CD21 antibody [LB21].


GTx74728 IHC-Fr Image

IHC-Fr analysis of human tonsil tissue using GTx74728 CD21 antibody [LB21].


GTx74728 IHC-Fr Image

IHC-Fr analysis of human spleen tissue using GTx74728 CD21 antibody [LB21].



For full product information, images and publications, please visit our [website](https://www.genetex.com).