

CD62L antibody [MEL-14]

Cat. No. GTX74801

| | |
|---------------------|--------------|
| Host | Rat |
| Clonality | Monoclonal |
| Isotype | IgG2a |
| Applications | FCM, IP, IHC |
| Reactivity | Mouse |

Package
500 µg

Applications

Application Note

Optimal dilutions/concentrations should be determined by the researcher.

Properties

| | |
|----------------------|----------------------------------------------------------------------------------------------------------------------------------------------------------------------------------------------------------------------------|
| Form | Liquid |
| Buffer | PBS |
| Preservative | No preservatives |
| Storage | Store as concentrated solution. Centrifuge briefly prior to opening vial. For short-term storage (1-2 weeks), store at 4°C. For long-term storage, aliquot and store at -20°C or below. Avoid multiple freeze-thaw cycles. |
| Concentration | 1 mg/ml (Please refer to the vial label for the specific concentration.) |
| Immunogen | Mouse B cell lymphoma, 38C-14 |
| Purification | Protein G purified |
| Conjugation | Unconjugated |

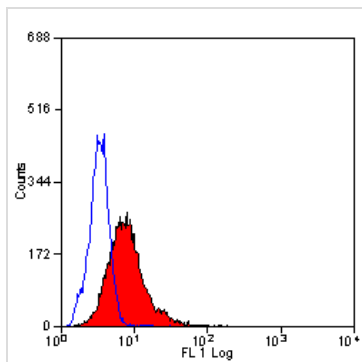
Note

For laboratory research use only. Not for any clinical, therapeutic, or diagnostic use in humans or animals. Not for animal or human consumption.

Purchasers shall not, and agree not to enable third parties to, analyze, copy, reverse engineer or otherwise attempt to determine the structure or sequence of the product.



For full product information, images and publications, please visit our [website](#).

DATA IMAGES

GTX74801 FCM Image

Staining of mouse spleen with Rat anti Mouse CD62L: RPE (GTX74800)



For full product information, images and publications, please visit our [website](#).