

IL2 Receptor alpha antibody [PC61.5.3.] (PE)

Cat. No. GTX74803

Host	Rat
Clonality	Monoclonal
Isotype	IgG1
Application	FACS
Reactivity	Mouse

Package
500 µl

APPLICATION

Application Note

For FACS: Use at an assay dependent dilution. Optimal dilutions/concentrations should be determined by the researcher.

Calculated MW 31 kDa. ([Note](#))

PROPERTIES

Form	Liquid
Buffer	PBS, BSA
Preservative	0.02% Sodium azide
Storage	Store as concentrated solution. Centrifuge briefly prior to opening vial. Store at 4°C. DO NOT FREEZE. Protect from light.
Concentration	0.1 mg/ml (Please refer to the vial label for the specific concentration.)
Immunogen	B6.1 CTL cell line
Purification	Protein G purified
Conjugation	Phycoerythrin (PE)

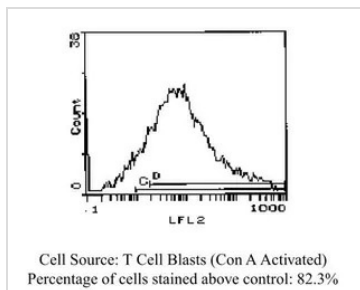
Note

For laboratory research use only. Not for any clinical, therapeutic, or diagnostic use in humans or animals. Not for animal or human consumption.

Purchasers shall not, and agree not to enable third parties to, analyze, copy, reverse engineer or otherwise attempt to determine the structure or sequence of the product.



For full product information, images and publications, please visit our [website](#).

DATA IMAGES

GTx74803 FACS Image

FACS analysis of Con A activated T cell blasts using CD25 antibody [PC61.5.3.] (PE).



For full product information, images and publications, please visit our [website](#).