

## CD4 antibody [RPA-T4] (FITC)

Cat. No. GTX74817

Host	Mouse
Clonality	Monoclonal
Isotype	IgG1
Application	FACS
Reactivity	Human

Reference ( 8 )

Package

100 test

## PRODUCT

## Summary

The RPA-T4 antibody reacts with human CD4, a 59 kDa protein which acts as a co-receptor for the T cell receptor (TCR) in its interaction with MHC Class II molecules on antigen-presenting cells. The extracellular domain of CD4 binds to the beta-2 domain of MHC Class II, while its cytoplasmic tail provides a binding site for the tyrosine kinase lck, facilitating the signaling cascade that initiates T cell activation. CD4, and co-receptors CCR5 and CXCR4, may also be utilized by HIV-1 to enter T cells. Human CD4 is typically expressed on thymocytes, some mature T cell populations such as Th17 and T regulatory (Treg) cells, as well as on dendritic cells.

## APPLICATION

## Application Note

\*Optimal dilutions/concentrations should be determined by the researcher.

Suggested dilution	Recommended dilution
FACS	1 µg (5 µl) for 10 <sup>5</sup> -10 <sup>8</sup> cells in 100 µl sample per test

Not tested in other applications.

Calculated MW	51 kDa. ( <a href="#">Note</a> )
Product Note	Epitope mapping studies have shown that antibodies, produced by clone RPA-T4, recognize an epitope within domain 1 of the extracellular region of the CD4 molecule.

## PROPERTIES

Form	Liquid
Buffer	10mM NaH <sub>2</sub> PO <sub>4</sub> , 150mM NaCl, 0.1% Gelatin
Preservative	0.09% Sodium azide
Storage	Store as concentrated solution. Centrifuge briefly prior to opening vial. Store at 4°C. DO NOT FREEZE. Protect from light.
Concentration	0.2 mg/ml (Please refer to the vial label for the specific concentration.)
Immunogen	Human PHA blasts.
Purification	Purified by affinity chromatography From tissue culture supernatant



For full product information, images and publications, please visit our [website](#).

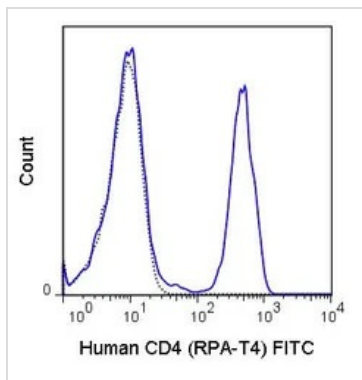
**Conjugation**

Fluorescein isothiocyanate (FITC)

**Note**

For laboratory research use only. Not for any clinical, therapeutic, or diagnostic use in humans or animals. Not for animal or human consumption.

Purchasers shall not, and agree not to enable third parties to, analyze, copy, reverse engineer or otherwise attempt to determine the structure or sequence of the product.

**DATA IMAGES**

**GTX74817 FACS Image**

FACS analysis of human peripheral blood lymphocytes using GTX74817 CD4 antibody [RPA-T4] (FITC).

Solid line : Primary antibody

Dashed line : FITC mouse IgG1 isotype control

Antibody amount : 1  $\mu$ g



For full product information, images and publications, please visit our [website](https://www.genetex.com).