

CD26 antibody [M-A261] (PE)

Cat. No. GTX74882

Host	Mouse
Clonality	Monoclonal
Isotype	IgG1
Application	FACS
Reactivity	Human

Package
100 test

APPLICATION

Application Note

*Optimal dilutions/concentrations should be determined by the researcher.

Suggested dilution	Recommended dilution
FACS	Neat

Note : Use 10µl of the suggested working dilution to label 10⁶ cells or 100µl whole blood.

Not tested in other applications.

Calculated MW 88 kDa. ([Note](#))

PROPERTIES

Form	Liquid
Buffer	PBS, 1% BSA, 5% Sucrose
Preservative	0.09% Sodium azide
Storage	Store as concentrated solution. Centrifuge briefly prior to opening vial. Store at 4°C. DO NOT FREEZE. Protect from light.
Concentration	Batch dependent (Please refer to the vial label for the specific concentration.)
Immunogen	Human T-cell leukaemia cells (T-CLL)
Purification	Protein G purified From tissue culture supernatant
Conjugation	Phycoerythrin (PE)

Note

For laboratory research use only. Not for any clinical, therapeutic, or diagnostic use in humans or animals. Not for animal or human consumption.

Purchasers shall not, and agree not to enable third parties to, analyze, copy, reverse engineer or otherwise attempt to determine the structure or sequence of the product.



For full product information, images and publications, please visit our [website](#).

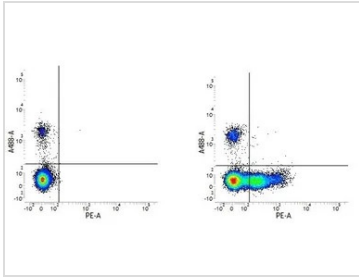
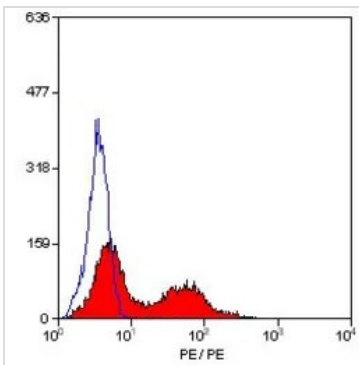
DATA IMAGES

GTX74882 FACS Image

Figure A. A488 conjugated Mouse anti Human CD19 and RPE conjugated Mouse IgG1 isotype control (GTX76639). Figure B. A488 conjugated Mouse anti Human CD19 and RPE conjugated Mouse anti Human CD26 (GTX74882). All experiments performed on human peripheral blood lymphocytes


GTX74882 FACS Image

FACS analysis of human peripheral blood lymphocytes using GTX74882 CD26 antibody [M-A261] (PE).



For full product information, images and publications, please visit our [website](https://www.genetex.com).