

## CD28 antibody [JJ319] (FITC)

**Cat. No. GTX74892**

<b>Host</b>	Mouse
<b>Clonality</b>	Monoclonal
<b>Isotype</b>	IgG1
<b>Applications</b>	FCM
<b>Reactivity</b>	Rat

**Package**  
100 µg

### Applications

#### Application Note

For FACS: Use at an assay dependent dilution. Optimal dilutions/concentrations should be determined by the researcher.

### Properties

<b>Form</b>	Liquid
<b>Buffer</b>	PBS
<b>Preservative</b>	0.02% Sodium azide
<b>Storage</b>	Store as concentrated solution. Centrifuge briefly prior to opening vial. For short-term storage (1-2 weeks), store at 4°C. For long-term storage, aliquot and store at -20°C or below. Avoid multiple freeze-thaw cycles. Protect from light.
<b>Concentration</b>	0.1 mg/ml (Please refer to the vial label for the specific concentration.)
<b>Immunogen</b>	Rat CD28 transfected A20J cells
<b>Purification</b>	Purified IgG
<b>Conjugation</b>	Fluorescein isothiocyanate (FITC) <a href="#">Wavelength</a>

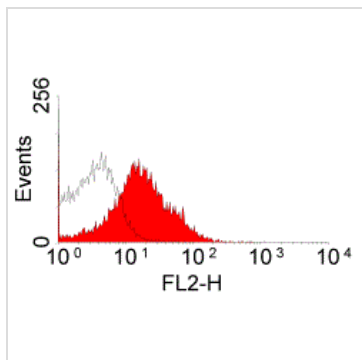
#### Note

For laboratory research use only. Not for any clinical, therapeutic, or diagnostic use in humans or animals. Not for animal or human consumption.

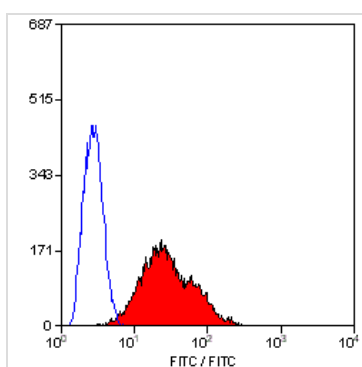
Purchasers shall not, and agree not to enable third parties to, analyze, copy, reverse engineer or otherwise attempt to determine the structure or sequence of the product.



For full product information, images and publications, please visit our [website](#).

**DATA IMAGES**

**GTX74892 FCM Image**

Staining of Rat lymph node cells with Mouse anti Rat CD28:RPE (GTX74893)


**GTX74892 FCM Image**

Staining of rat thymus cells with Mouse anti Rat CD28:FITC (GTX74892)



For full product information, images and publications, please visit our [website](#).