

CD31 antibody [TLD-3A12]

Cat. No. GTX74899

Host	Mouse
Clonality	Monoclonal
Isotype	IgG1
Applications	WB, ICC/IF, IHC-P, IHC-Fr, FCM, ELISA
Reactivity	Human, Mouse, Rat, Pig, Rhesus Monkey

References (16)

Package

250 µg

Applications

Application Note

*Optimal dilutions/concentrations should be determined by the researcher.

Suggested dilution	Recommended dilution
WB	Assay dependent
ICC/IF	Assay dependent
IHC-P	Assay dependent
IHC-Fr	1/10-1/100
FCM	1/10-1/100
ELISA	Assay dependent

Note : Use 10µl of the suggested working dilution to label 10⁶ cells in 100µl.

Not tested in other applications.

Calculated MW 76 kDa. ([Note](#))

Product Note

This antibody has been shown to partially block the proliferative response of antigen-specific CD4+ T cells to antigen-presenting cells and relevant antigen. (Stevenson, K.S. et al.2009)

This antibody is suitable for use in IHC-P pre-treated with 0.2M boric acid, pH7.0. (Wilson et al. 2007)

This antibody has been shown to be cross-reactive with endothelial cells derived from rhesus macaque (Maclean et al. 2001)

Properties

Form	Liquid
Buffer	PBS
Preservative	0.09% Sodium azide
Storage	Store as concentrated solution. Centrifuge briefly prior to opening vial. For short-term storage (1-2 weeks), store at 4°C. For long-term storage, aliquot and store at -20°C or below. Avoid multiple freeze-thaw cycles.
Concentration	1.0 mg/ml (Please refer to the vial label for the specific concentration.)
Immunogen	Activated, Lewis rat derived microglial cells.

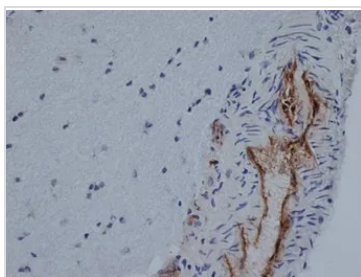


For full product information, images and publications, please visit our [website](#).

Date 2026 / 05 / 05 Page 1 of 2

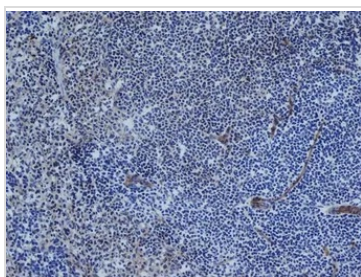
Purification	Protein A purified From tissue culture supernatant
Conjugation	Unconjugated
Note	For laboratory research use only. Not for any clinical, therapeutic, or diagnostic use in humans or animals. Not for animal or human consumption. Purchasers shall not, and agree not to enable third parties to, analyze, copy, reverse engineer or otherwise attempt to determine the structure or sequence of the product.

DATA IMAGES



GTX74899 IHC-Fr Image

IHC-Fr analysis of rat brain tissue using GTX74899 CD31 antibody [TLD-3A12].



GTX74899 IHC-Fr Image

IHC-Fr analysis of rat spleen tissue using GTX74899 CD31 antibody [TLD-3A12].



For full product information, images and publications, please visit our [website](#).