

## CD24 antibody [SN3] (PE)

Cat. No. GTX74948

Host	Mouse
Clonality	Monoclonal
Isotype	IgG1
Applications	FCM
Reactivity	Human

References ( 1 )  
Package  
100 test

## Applications

## Application Note

\*Optimal dilutions/concentrations should be determined by the researcher.

Suggested dilution	Recommended dilution
FCM	20 µl reagent / 100 µl of whole blood or 10 <sup>6</sup> cells in a suspension

Not tested in other applications.

## Properties

Form	Liquid
Buffer	PBS
Preservative	15mM Sodium azide
Storage	Store as concentrated solution. Centrifuge briefly prior to opening vial. Store at 4°C. DO NOT FREEZE. Protect from light.
Concentration	Batch dependent (Please refer to the vial label for the specific concentration.)
Immunogen	Glycoproteins purified from human NALM-1 cell line.
Purification	Purified by size-exclusion chromatography
Conjugation	Phycoerythrin (PE) <a href="#">Wavelength</a>

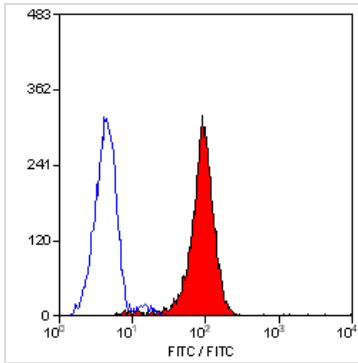
## Note

For laboratory research use only. Not for any clinical, therapeutic, or diagnostic use in humans or animals. Not for animal or human consumption.

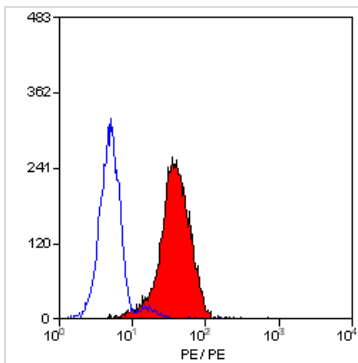
Purchasers shall not, and agree not to enable third parties to, analyze, copy, reverse engineer or otherwise attempt to determine the structure or sequence of the product.



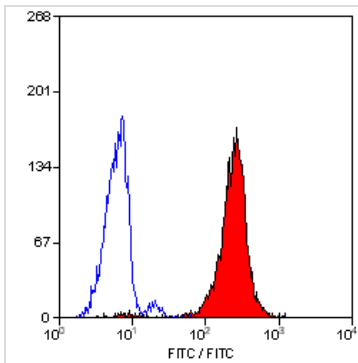
For full product information, images and publications, please visit our [website](#).

**DATA IMAGES**

**GTX74948 FCM Image**

Staining of human peripheral blood granulocytes with Mouse anti Human CD24:FITC (GTX74946)


**GTX74948 FCM Image**

Staining of human peripheral blood granulocytes with Mouse anti Human CD24:RPE (GTX74948)


**GTX74948 FCM Image**

Staining of human peripheral blood granulocytes with Mouse anti Human CD24 (GTX74945)



For full product information, images and publications, please visit our [website](https://www.genetex.com).