

## CD24 antibody [SN3] (Low endotoxin, azide free)

Cat. No. GTX74949

<b>Host</b>	Mouse
<b>Clonality</b>	Monoclonal
<b>Isotype</b>	IgG1
<b>Applications</b>	IHC-Fr, FCM
<b>Reactivity</b>	Human, Chimpanzee

References ( 1 )

Package

100 µg

## Applications

## Application Note

\*Optimal dilutions/concentrations should be determined by the researcher.

Suggested dilution	Recommended dilution
IHC-Fr	Assay dependent
FCM	Assay dependent

Not tested in other applications.

## Properties

<b>Form</b>	Liquid
<b>Buffer</b>	PBS
<b>Preservative</b>	No preservative
<b>Storage</b>	Store as concentrated solution. Centrifuge briefly prior to opening vial. For short-term storage (1-2 weeks), store at 4°C. For long-term storage, aliquot and store at -20°C or below. Avoid multiple freeze-thaw cycles.
<b>Concentration</b>	1.0 mg/ml (Please refer to the vial label for the specific concentration.)
<b>Immunogen</b>	Glycoproteins purified from human NALM-1 cell line.
<b>Purification</b>	Protein A purified From tissue culture supernatant
<b>Endotoxin</b>	< 0.01 EU/µg (determined by the LAL assay)
<b>Conjugation</b>	Unconjugated

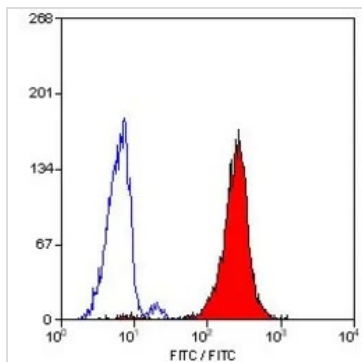
## Note

For laboratory research use only. Not for any clinical, therapeutic, or diagnostic use in humans or animals. Not for animal or human consumption.

Purchasers shall not, and agree not to enable third parties to, analyze, copy, reverse engineer or otherwise attempt to determine the structure or sequence of the product.

For full product information, images and publications, please visit our [website](#).

## DATA IMAGES



### GTX74949 FCM Image

FACS analysis of human peripheral blood granulocytes using GTX74949 CD24 antibody [SN3] (Low endotoxin, azide free).



For full product information, images and publications, please visit our [website](#).