

## TCR alpha + TCR beta antibody [H57-597] (FITC)

**Cat. No. GTX74980**

<b>Host</b>	Armenian Hamster
<b>Clonality</b>	Monoclonal
<b>Isotype</b>	IgG
<b>Application</b>	IHC-Fr, FACS
<b>Reactivity</b>	Mouse

**Package**  
100 µg

## APPLICATION

**Application Note**

\*Optimal dilutions/concentrations should be determined by the researcher.

Suggested dilution	Recommended dilution
IHC-Fr	Assay dependent
FACS	Assay dependent

Not tested in other applications.

## PROPERTIES

<b>Form</b>	Liquid
<b>Buffer</b>	Phosphate-buffered saline containing 0.02% sodium azide and BSA
<b>Storage</b>	Store as concentrated solution. Centrifuge briefly prior to opening vial. For short-term storage (1-2 weeks), store at 4°C. For long-term storage, aliquot and store at -20°C or below. Avoid multiple freeze-thaw cycles. Protect from light.
<b>Concentration</b>	0.1 mg/ml (Please refer to the vial label for the specific concentration.)
<b>Immunogen</b>	Affinity purified murine T cell receptor
<b>Purification</b>	Purified IgG
<b>Conjugation</b>	Fluorescein isothiocyanate (FITC)

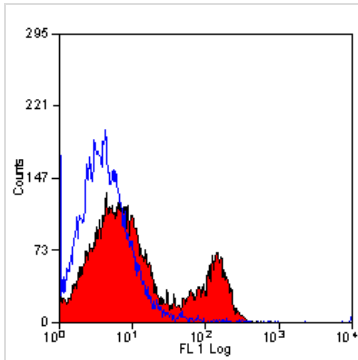
**Note**

For laboratory research use only. Not for any clinical, therapeutic, or diagnostic use in humans or animals. Not for animal or human consumption.

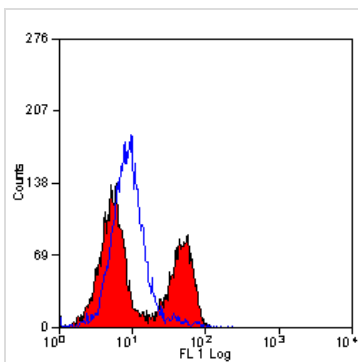
Purchasers shall not, and agree not to enable third parties to, analyze, copy, reverse engineer or otherwise attempt to determine the structure or sequence of the product.



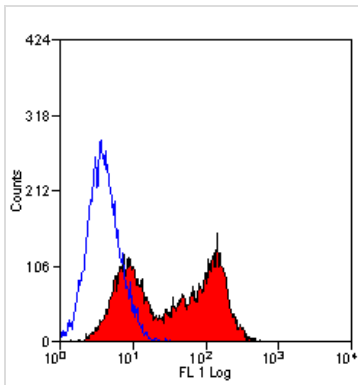
For full product information, images and publications, please visit our [website](#).

**DATA IMAGES**

**GTX74980 FACS Image**

Staining of mouse spleen cells with Hamster anti Mouse TCR alpha/beta (GTX74978)


**GTX74980 FACS Image**

Staining of mouse peripheral blood lymphocytes with Hamster anti Mouse TCR alpha/beta (GTX74982)


**GTX74980 FACS Image**

Staining of mouse spleen cells with Hamster anti Mouse TCR Alpha/Beta:FITC (GTX74980)



For full product information, images and publications, please visit our [website](https://www.genetex.com).