

CD161 antibody [10-78]

Cat. No. GTX74998

Host	Mouse
Clonality	Monoclonal
Isotype	IgG1
Applications	IHC-Fr, FCM
Reactivity	Rat

Package
250 µg

Applications

Application Note

For FACS: Use at an assay dependent dilution. For IHC-Fr: Use at an assay dependent dilution. Optimal dilutions/concentrations should be determined by the researcher.

Properties

Form	Liquid
Buffer	PBS
Preservative	0.02% Sodium azide
Storage	Store as concentrated solution. Centrifuge briefly prior to opening vial. For short-term storage (1-2 weeks), store at 4°C. For long-term storage, aliquot and store at -20°C or below. Avoid multiple freeze-thaw cycles.
Concentration	1 mg/ml (Please refer to the vial label for the specific concentration.)
Immunogen	Purified splenic NK cells from the LEW rat strain.
Purification	Protein G purified
Conjugation	Unconjugated

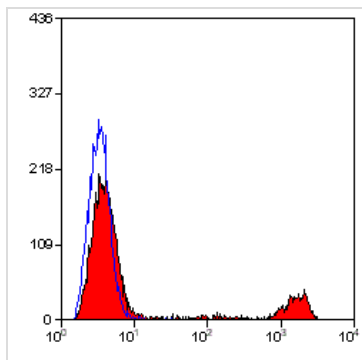
Note

For laboratory research use only. Not for any clinical, therapeutic, or diagnostic use in humans or animals. Not for animal or human consumption.

Purchasers shall not, and agree not to enable third parties to, analyze, copy, reverse engineer or otherwise attempt to determine the structure or sequence of the product.



For full product information, images and publications, please visit our [website](#).

DATA IMAGES

GTX74998 FCM Image

Staining of rat peripheral blood lymphocytes with Mouse anti RatT CD161(GTX74998):Alexa Fluor® 647



For full product information, images and publications, please visit our [website](https://www.genetex.com).

Date 2025 / 12 / 28 Page 2 of 2