

CD19 antibody [6D5]

Cat. No. GTX75012

Host	Rat
Clonality	Monoclonal
Isotype	IgG2a
Applications	IHC-Fr, FCM, IP
Reactivity	Mouse

Package
250 µg

Applications

Application Note

*Optimal dilutions/concentrations should be determined by the researcher.

Suggested dilution	Recommended dilution
IHC-Fr	Assay dependent
FCM	1/25-1/100
IP	Assay dependent

Note : Use 10µl of the suggested working dilution to label 10⁶ cells in 100µl.

Not tested in other applications.

Product Note Clone 6D5 has been shown to recognize the same epitope as clone ID3 in cross-competition assays.

Properties

Form	Liquid
Buffer	PBS
Preservative	0.09% Sodium azide
Storage	Store as concentrated solution. Centrifuge briefly prior to opening vial. For short-term storage (1-2 weeks), store at 4°C. For long-term storage, aliquot and store at -20°C or below. Avoid multiple freeze-thaw cycles.
Concentration	1.0 mg/ml (Please refer to the vial label for the specific concentration.)
Immunogen	Human K562 cell line transfected with murine CD19.
Purification	Protein G purified From tissue culture supernatant
Conjugation	Unconjugated



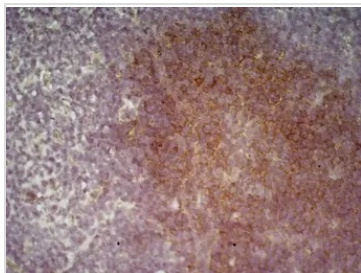
For full product information, images and publications, please visit our [website](#).

For laboratory research use only. Not for any clinical, therapeutic, or diagnostic use in humans or animals. Not for animal or human consumption.

Note

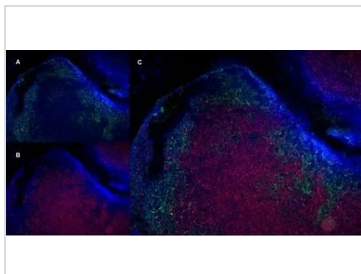
Purchasers shall not, and agree not to enable third parties to, analyze, copy, reverse engineer or otherwise attempt to determine the structure or sequence of the product.

DATA IMAGES



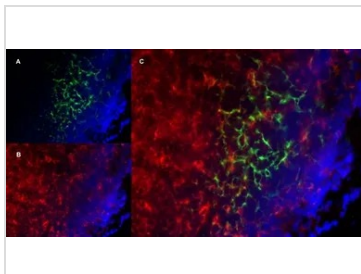
GTX75012 IHC-Fr Image

IHC analysis of mouse lymph node tissue using GTX75012 CD19 antibody [6D5].



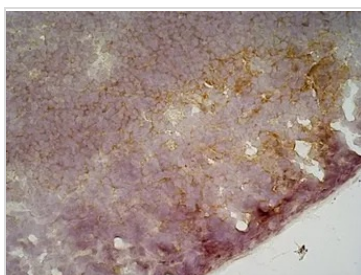
GTX75012 IHC-Fr Image

IHC-Fr staining of a mouse lymph node with Rat anti MouseCD19 antibody, clone 6D5 (GTX75012), green in A and Rat anti Mlouse CD8 antibody, clone YTS105.18, red in B. Merged image in C with nuclei counterstained blue using DAPI. Low power



GTX75012 IHC-Fr Image

IHC-Fr staining of a mouse lymph node with Rat anti MouseCD19 antibody, clone 6D5 (GTX75012), green in A and Rat anti Mlouse CD8 antibody, clone YTS105.18, red in B. Merged image in C with nuclei counterstained blue using DAPI. High power



GTX75012 IHC-Fr Image

IHC analysis of mouse lymph node tissue using GTX75012 CD19 antibody [6D5].



For full product information, images and publications, please visit our [website](https://www.genetex.com).