

## CD19 antibody [6D5]

Cat. No. GTX75017

Host	Rat
Clonality	Monoclonal
Isotype	IgG2a
Applications	IHC-Fr, FCM, IP
Reactivity	Mouse

Package  
100 µg

## Applications

## Application Note

\*Optimal dilutions/concentrations should be determined by the researcher.

Suggested dilution	Recommended dilution
IHC-Fr	Assay dependent
FCM	1/10-1/50
IP	Assay dependent

**Note : Use 10µl of the suggested working dilution to label 10<sup>6</sup> cells in 100µl.**

Not tested in other applications.

**Product Note** Clone 6D5 has been shown to recognize the same epitope as clone ID3 in cross-competition assays.

## Properties

Form	Liquid
Buffer	PBS
Preservative	0.09% Sodium azide
Storage	Store as concentrated solution. Centrifuge briefly prior to opening vial. For short-term storage (1-2 weeks), store at 4°C. For long-term storage, aliquot and store at -20°C or below. Avoid multiple freeze-thaw cycles.
Concentration	1 mg/ml (Please refer to the vial label for the specific concentration.)
Immunogen	Human K562 cell line transfected with murine CD19.
Purification	Protein G purified From tissue culture supernatant
Conjugation	Unconjugated

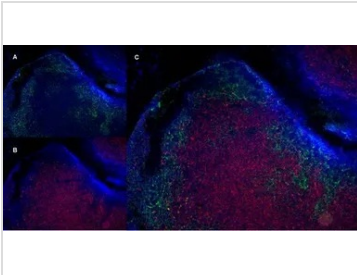


For full product information, images and publications, please visit our [website](#).

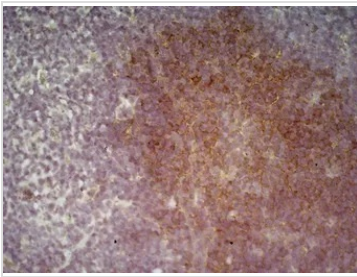
For laboratory research use only. Not for any clinical, therapeutic, or diagnostic use in humans or animals. Not for animal or human consumption.

**Note**

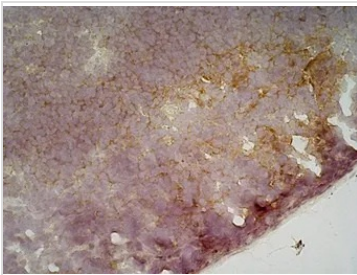
Purchasers shall not, and agree not to enable third parties to, analyze, copy, reverse engineer or otherwise attempt to determine the structure or sequence of the product.

**DATA IMAGES**

**GTX75017 IHC-Fr Image**

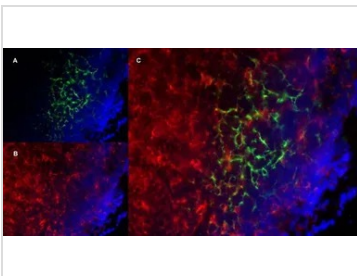
IHC-Fr staining of a mouse lymph node with Rat anti MouseCD19 antibody, clone 6D5 (GTX75017), green in A and Rat anti Mlouse CD8 antibody, clone YTS105.18, red in B. Merged image in C with nuclei counterstained blue using DAPI. Low power


**GTX75017 IHC-Fr Image**

IHC analysis of mouse lymph node tissue using GTX75017 CD19 antibody [6D5].


**GTX75017 IHC-Fr Image**

IHC analysis of mouse lymph node tissue using GTX75017 CD19 antibody [6D5].


**GTX75017 IHC-Fr Image**

IHC-Fr staining of a mouse lymph node with Rat anti MouseCD19 antibody, clone 6D5 (GTX75017), green in A and Rat anti Mlouse CD8 antibody, clone YTS105.18, red in B. Merged image in C with nuclei counterstained blue using DAPI. High power



For full product information, images and publications, please visit our [website](https://www.genetex.com).