

Integrin beta 4 antibody [450-9D]

Cat. No. GTX75041

Host	Mouse
Clonality	Monoclonal
Isotype	IgG1
Applications	WB, ICC/IF, IHC-Fr, FCM, IP
Reactivity	Human, Ferret, Mustelid

References (1)

Package

200 µg

Applications

Application Note

*Optimal dilutions/concentrations should be determined by the researcher.

Suggested dilution	Recommended dilution
WB	Assay dependent
ICC/IF	Assay dependent
IHC-Fr	1/500-1/1,000
FCM	1/25-1/100
IP	Assay dependent

Note : The epitope recognised by this antibody is reported to be sensitive to formaldehyde fixation and tissue processing. Recommend the use of acetone fixation for frozen sections.

Use 10µl of the suggested working dilution to label 10⁶ cells in 100µl.

Not tested in other applications.

Calculated MW	202 kDa. (Note)
Product Note	This antibody recognizes an extracellular epitope on Integrin beta 4.

Properties

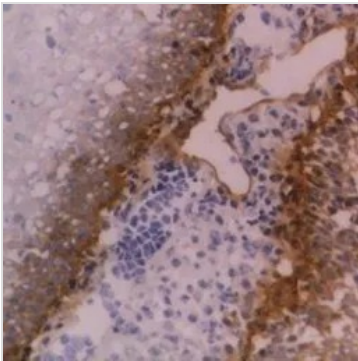
Form	Liquid
Buffer	PBS
Preservative	0.09% Sodium azide
Storage	Store as concentrated solution. Centrifuge briefly prior to opening vial. For short-term storage (1-2 weeks), store at 4°C. For long-term storage, aliquot and store at -20°C or below. Avoid multiple freeze-thaw cycles.
Concentration	1.0 mg/ml (Please refer to the vial label for the specific concentration.)
Immunogen	Purified alpha6 beta4 integrin from A431 cells.



For full product information, images and publications, please visit our [website](#).

Purification	Protein G purified From tissue culture supernatant
Conjugation	Unconjugated
Note	For laboratory research use only. Not for any clinical, therapeutic, or diagnostic use in humans or animals. Not for animal or human consumption. Purchasers shall not, and agree not to enable third parties to, analyze, copy, reverse engineer or otherwise attempt to determine the structure or sequence of the product.

DATA IMAGES



GTX75041 IHC-Fr Image

IHC-Fr analysis of human tonsil tissue using GTX75041 Integrin beta 4 antibody [450-9D].



For full product information, images and publications, please visit our [website](#).