

Integrin alpha 6 antibody [450-30A]

Cat. No. GTX75044

| | |
|---------------------|-----------------|
| Host | Mouse |
| Clonality | Monoclonal |
| Isotype | IgG1 |
| Applications | WB, IHC-Fr, FCM |
| Reactivity | Human |

References (1)

Package

200 µg

Applications

Application Note

*Optimal dilutions/concentrations should be determined by the researcher.

| Suggested dilution | Recommended dilution |
|--------------------|----------------------|
| WB | Assay dependent |
| IHC-Fr | 1/50-1/100 |
| FCM | 1/10-1/50 |

Note : The epitope recognised by this antibody is reported to be sensitive to formaldehyde fixation and tissue processing. Recommend the use of acetone fixation for frozen sections.

Use 10µl of the suggested working dilution to label 10⁶ cells in 100µl.

Not tested in other applications.

Calculated MW 127 kDa. ([Note](#))

Properties

| | |
|----------------------|--|
| Form | Liquid |
| Buffer | PBS |
| Preservative | 0.09% Sodium azide |
| Storage | Store as concentrated solution. Centrifuge briefly prior to opening vial. For short-term storage (1-2 weeks), store at 4°C. For long-term storage, aliquot and store at -20°C or below. Avoid multiple freeze-thaw cycles. |
| Concentration | 1.0 mg/ml (Please refer to the vial label for the specific concentration.) |
| Immunogen | integrin a6b4 purified from A431 cells |
| Purification | Protein G purified From tissue culture supernatant |
| Conjugation | Unconjugated |



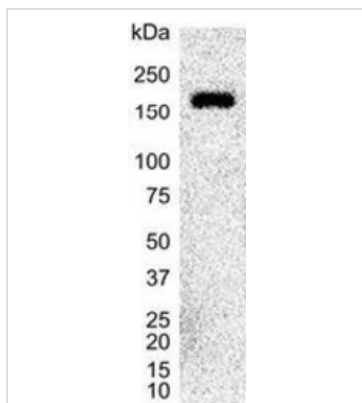
For full product information, images and publications, please visit our [website](#).

For laboratory research use only. Not for any clinical, therapeutic, or diagnostic use in humans or animals. Not for animal or human consumption.

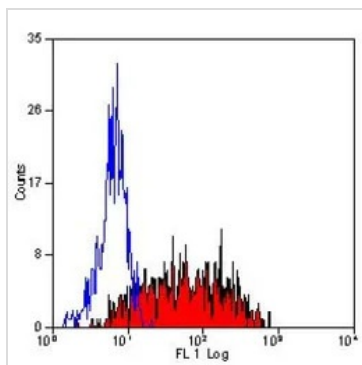
Note

Purchasers shall not, and agree not to enable third parties to, analyze, copy, reverse engineer or otherwise attempt to determine the structure or sequence of the product.

DATA IMAGES

**GTX75044 WB Image**

WB analysis of Jurkat cell lysate using GTX75044 Integrin alpha 6 antibody [450-30A].

**GTX75044 FCM Image**

FACS analysis of human peripheral blood monocytes using GTX75044 Integrin alpha 6 antibody [450-30A].



For full product information, images and publications, please visit our [website](#).