

Interferon gamma antibody [XMG1.2]

Cat. No. GTX75117

Host	Rat
Clonality	Monoclonal
Isotype	IgG1
Applications	FCM, ELISA
Reactivity	Mouse

Package
250 µg

Applications

Application Note

*Optimal dilutions/concentrations should be determined by the researcher.

Suggested dilution	Recommended dilution
FCM	1/10-1/50
ELISA	Assay dependent

Note : Membrane permeabilization is required for this application. Use 10µl of the suggested working dilution to label 10⁶ cells in 100µl.

Not tested in other applications.

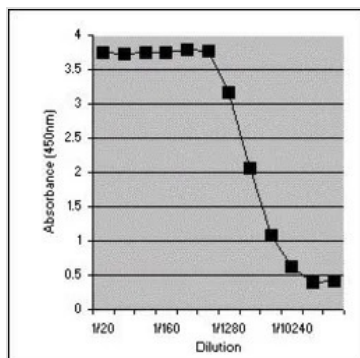
Properties

Form	Liquid
Buffer	PBS
Preservative	0.09% Sodium azide
Storage	Store as concentrated solution. Centrifuge briefly prior to opening vial. For short-term storage (1-2 weeks), store at 4°C. For long-term storage, aliquot and store at -20°C or below. Avoid multiple freeze-thaw cycles.
Concentration	1.0 mg/ml (Please refer to the vial label for the specific concentration.)
Immunogen	Recombinant mouse IFN gamma.
Purification	Purified IgG
Conjugation	Unconjugated
Note	<p>For laboratory research use only. Not for any clinical, therapeutic, or diagnostic use in humans or animals. Not for animal or human consumption.</p> <p>Purchasers shall not, and agree not to enable third parties to, analyze, copy, reverse engineer or otherwise attempt to determine the structure or sequence of the product.</p>



For full product information, images and publications, please visit our [website](#).

DATA IMAGES



GTX75117 ELISA Image

Sandwich ELISA analysis of mouse interferon gamma recombinant protein using Rat anti Mouse Interferon Gamma (GTX75117) as a capture reagent and biotinylated Rabbit anti Mouse Interferon Gamma as the detection reagent.



For full product information, images and publications, please visit our [website](#).