

CD40 antibody [LOB7/6] (PE)

Cat. No. GTX75205

Host	Mouse
Clonality	Monoclonal
Isotype	IgG2a
Applications	FCM
Reactivity	Human, Dog

Package
100 test

Applications

Application Note

*Optimal dilutions/concentrations should be determined by the researcher.

Suggested dilution	Recommended dilution
FCM	Neat

Note : Use 10 μ l of the suggested working dilution to label 10⁶ cells in 100 μ l.

Not tested in other applications.

Product Note This antibody recognizes the human CD40.

Properties

Form	Liquid
Buffer	PBS, 1% BSA
Preservative	0.09% Sodium azide
Storage	Store as concentrated solution. Centrifuge briefly prior to opening vial. Store at 4°C. DO NOT FREEZE. Protect from light.
Concentration	Batch dependent (Please refer to the vial label for the specific concentration.)
Immunogen	CD40 Ig(Fc) fusion protein containing the EC region of human CD40 and Fc region of human IgG.
Purification	Purified IgG
Conjugation	Phycoerythrin (PE) Wavelength

Note

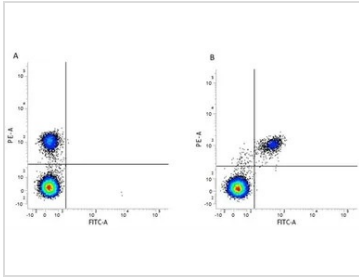
For laboratory research use only. Not for any clinical, therapeutic, or diagnostic use in humans or animals. Not for animal or human consumption.

Purchasers shall not, and agree not to enable third parties to, analyze, copy, reverse engineer or otherwise attempt to determine the structure or sequence of the product.



For full product information, images and publications, please visit our [website](#).

DATA IMAGES



GTx75205 FCM Image

Figure A. FITC conjugated mouse anti human CD19 and RPE conjugated Mouse IgG2a isotype control.

Figure B. FITC conjugated mouse anti human CD19 and RPE conjugated mouse anti human CD40

(GTx75205). All experiments performed on red cell lysed Human peripheral blood gated on lymphocytes



For full product information, images and publications, please visit our [website](#).