

CD55 antibody [67] (PE)

Cat. No. GTX75214

Host	Mouse
Clonality	Monoclonal
Isotype	IgG1
Applications	FCM
Reactivity	Human

Package
100 test

Applications

Application Note

*Optimal dilutions/concentrations should be determined by the researcher.

Suggested dilution	Recommended dilution
FCM	Neat

Note : Use 10µl of the suggested working dilution to label 10⁶ cells in 100µl.

Not tested in other applications.

Properties

Form	Liquid
Buffer	PBS, 1% BSA, 5% Sucrose
Preservative	0.09% Sodium azide
Storage	Store as concentrated solution. Centrifuge briefly prior to opening vial. Store at 4°C. DO NOT FREEZE. Protect from light.
Concentration	Batch dependent (Please refer to the vial label for the specific concentration.)
Immunogen	K562 cells.
Purification	Protein A purified From tissue culture supernatant
Conjugation	Phycoerythrin (PE) Wavelength

Note

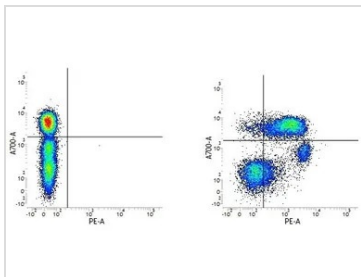
For laboratory research use only. Not for any clinical, therapeutic, or diagnostic use in humans or animals. Not for animal or human consumption.

Purchasers shall not, and agree not to enable third parties to, analyze, copy, reverse engineer or otherwise attempt to determine the structure or sequence of the product.



For full product information, images and publications, please visit our [website](#).

DATA IMAGES



GTX75214 FCM Image

Figure A. A700 conjugated Mouse anti Human CD3 and RPE conjugated Mouse IgG1 isotype control (GTX76639). Figure B. A700 conjugated Mouse anti Human CD3 and RPE conjugated Mouse anti Human CD55 (GTX75214). All experiments performed on human Peripheral blood lymphocytes



For full product information, images and publications, please visit our [website](https://www.genetex.com).