

ICAM1 / CD54 antibody [15.2] (PE)

Cat. No. GTX75219

Host	Mouse
Clonality	Monoclonal
Isotype	IgG1
Applications	FCM
Reactivity	Human, Pig

References (15)
Package
100 test

PRODUCT

Summary

The 15.2 antibody reacts with human CD54, also known as ICAM-1 (Intercellular Adhesion Molecule 1), a 90-110 kDa cell surface glycoprotein that is inducibly expressed on both immune and endothelial cells. As its name implies, ICAM-1 participates in cell-cell adhesion between leukocytes and endothelial cells, facilitating leukocyte recruitment and transmigration at sites of inflammation. The ligands for ICAM-1 are also expressed on leukocyte and endothelial cells, and include Mac-1, fibrinogen, and a member of the integrin α protein family, LFA-1 (CD11a).

Applications

Application Note

*Optimal dilutions/concentrations should be determined by the researcher.

Suggested dilution	Recommended dilution
FCM	0.5 μ g (5 μ l) for 10^5 - 10^8 cells in 100 μ l sample per test

Not tested in other applications.

Properties

Form	Liquid
Buffer	10mM NaH ₂ PO ₄ , 150mM NaCl, 0.1% Gelatin
Preservative	0.09% Sodium azide
Storage	Store as concentrated solution. Centrifuge briefly prior to opening vial. Store at 4°C. DO NOT FREEZE. Protect from light.
Concentration	0.1 mg/ml (Please refer to the vial label for the specific concentration.)
Immunogen	Human monocytes
Purification	Purified by affinity chromatography From tissue culture supernatant
Conjugation	Phycoerythrin (PE) Wavelength

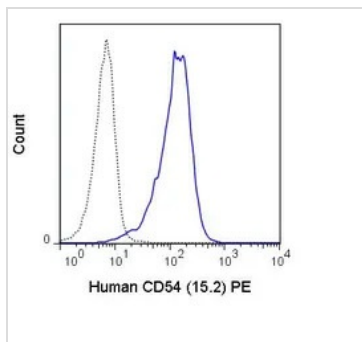
Note

For laboratory research use only. Not for any clinical, therapeutic, or diagnostic use in humans or animals. Not for animal or human consumption.

Purchasers shall not, and agree not to enable third parties to, analyze, copy, reverse engineer or otherwise attempt to determine the structure or sequence of the product.



For full product information, images and publications, please visit our [website](#).

DATA IMAGES

GTX75219 FCM Image

FACS analysis of human peripheral blood monocytes using GTX75219 ICAM1 / CD54 antibody [15.2] (PE).

Solid line : Primary antibody

Dashed line : PE mouse IgG1 isotype control

Antibody amount : 0.5 μ g



For full product information, images and publications, please visit our [website](#).