

CD20 antibody [2H7] (FITC)

Cat. No. GTX75268

Host	Mouse
Clonality	Monoclonal
Isotype	IgG2b
Applications	FCM
Reactivity	Human, Rhesus Monkey

References (1)

Package

100 µg

Applications

Application Note

*Optimal dilutions/concentrations should be determined by the researcher.

Suggested dilution	Recommended dilution
FCM	Neat-1/10

Note : Use 10µl of the suggested working dilution to label 10⁶ cells or 100µl whole blood.

Not tested in other applications.

Product Note

The epitope recognized by clone 2H7 has been mapped to the following sequence found in the large extracellular loop of human CD20: YNCEPANPSEKNSPST. Furthermore it appears that Mouse anti Human CD20 antibody, clone 2H7 only recognizes human CD20 in its native oligomeric form (Polyak et al. 2002).

Properties

Form	Liquid
Buffer	PBS, 1% BSA
Preservative	0.09% Sodium azide
Storage	Store as concentrated solution. Centrifuge briefly prior to opening vial. For short-term storage (1-2 weeks), store at 4°C. For long-term storage, aliquot and store at -20°C or below. Avoid multiple freeze-thaw cycles. Protect from light.
Concentration	0.1 mg/ml (Please refer to the vial label for the specific concentration.)
Purification	Protein G purified From tissue culture supernatant
Conjugation	Fluorescein isothiocyanate (FITC) Wavelength

Note

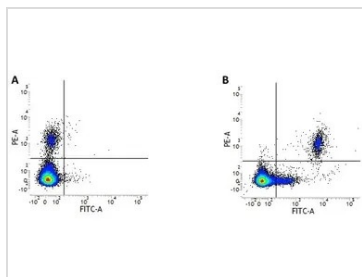
For laboratory research use only. Not for any clinical, therapeutic, or diagnostic use in humans or animals. Not for animal or human consumption.

Purchasers shall not, and agree not to enable third parties to, analyze, copy, reverse engineer or otherwise attempt to determine the structure or sequence of the product.



For full product information, images and publications, please visit our [website](#).

DATA IMAGES



GTX75268 FCM Image

Figure A. RPE conjugated mouse anti human CD19 (GTX75601) and FITC conjugated Mouse IgG2b isotype control (GTX76400). Figure B. RPE conjugated mouse anti human CD19 (GTX75601) and FITC conjugated mouse anti human CD20 (GTX75268). All experiments performed on red cell lysed human peripheral blood gated on lymphocytes



For full product information, images and publications, please visit our [website](#).