

CD8 antibody [4B11]

Cat. No. GTX75393

Host	Mouse
Clonality	Monoclonal
Isotype	IgG2b
Applications	WB, IHC-P, IHC-Fr
Reactivity	Human

References (2)

Package

200 µl

Applications

Application Note

*Optimal dilutions/concentrations should be determined by the researcher.

Suggested dilution	Recommended dilution
WB	1:25
IHC-P	1:50
IHC-Fr	1:50

Note : This product requires antigen retrieval using heat treatment prior to staining of paraffin sections. Tris/EDTA buffer pH 8.0 is recommended for this purpose.

Not tested in other applications.

Product Note

The antibody binds to the beta chain, recognizing an epitope that is dependent upon expression of both CD8 alpha and CD8 beta.

Properties

Form	Liquid
Buffer	Tissue culture supernatant
Preservative	0.09% Sodium azide
Storage	Store as concentrated solution. Centrifuge briefly prior to opening vial. Store at 4°C. DO NOT FREEZE.
Immunogen	Synthetic peptide derived from the carboxy terminal region of the human CD8 alpha chain coupled to a N-terminal cysteine, with the sequence C-KSDGKPSLSARYV. The peptide was coupled to bovine serum albumin and keyhole limpet hemocyanin.
Purification	Unpurified
Conjugation	Unconjugated



For full product information, images and publications, please visit our [website](#).

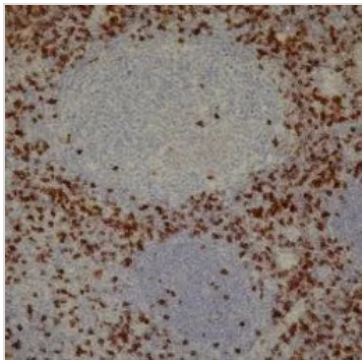
Date 2026 / 01 / 08 Page 1 of 2

For laboratory research use only. Not for any clinical, therapeutic, or diagnostic use in humans or animals. Not for animal or human consumption.

Note

Purchasers shall not, and agree not to enable third parties to, analyze, copy, reverse engineer or otherwise attempt to determine the structure or sequence of the product.

DATA IMAGES



GTX75393 IHC-P Image

IHC-P analysis of human tonsil tissue using GTX75393 CD8 antibody [4B11].



For full product information, images and publications, please visit our [website](#).