

CD34 antibody [MEC14.7] (FITC)

Cat. No. GTX75412

| | |
|---------------------|------------------|
| Host | Rat |
| Clonality | Monoclonal |
| Isotype | IgG2a |
| Applications | ICC/IF, FCM, IHC |
| Reactivity | Mouse, Rabbit |

References (40)

Package

100 µg

Applications

Application Note

*Optimal dilutions/concentrations should be determined by the researcher.

| Suggested dilution | Recommended dilution |
|--------------------|----------------------|
| ICC/IF | Assay dependent |
| FCM | 1/5-1/10 |
| IHC | Assay dependent |

Note : Use 10µl of the suggested working dilution to label 10⁶ cells in 100µl.

Not tested in other applications.

Product Note This antibody recognizes a neuraminidase sensitive epitope.

Properties

| | |
|----------------------|--|
| Form | Liquid |
| Buffer | PBS, 1% BSA |
| Preservative | 0.09% Sodium azide |
| Storage | Store as concentrated solution. Centrifuge briefly prior to opening vial. For short-term storage (1-2 weeks), store at 4°C. For long-term storage, aliquot and store at -20°C or below. Avoid multiple freeze-thaw cycles. Protect from light. |
| Concentration | 0.5 mg/ml (Please refer to the vial label for the specific concentration.) |
| Immunogen | T-end.1, a pMT transformed endothelial cell line. |
| Purification | Protein G purified From tissue culture supernatant |
| Conjugation | Fluorescein isothiocyanate (FITC) Wavelength |



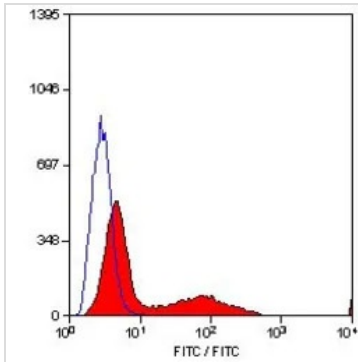
For full product information, images and publications, please visit our [website](#).

For laboratory research use only. Not for any clinical, therapeutic, or diagnostic use in humans or animals. Not for animal or human consumption.

Note

Purchasers shall not, and agree not to enable third parties to, analyze, copy, reverse engineer or otherwise attempt to determine the structure or sequence of the product.

DATA IMAGES

**GTX75412 FCM Image**

FACS analysis of mouse bone marrow cells using GTX75412 CD34 antibody [MEC14.7] (FITC).



For full product information, images and publications, please visit our [website](#).