

CD147 antibody [MEM-M6/1] (Azide free)

Cat. No. GTX75485

Host	Mouse
Clonality	Monoclonal
Isotype	IgG1
Applications	WB, FCM, IP
Reactivity	Human

References (2)

Package

500 µg

Applications

Application Note

*Optimal dilutions/concentrations should be determined by the researcher.

Suggested dilution	Recommended dilution
WB	Assay dependent
FCM	1/10-1/50
IP	Assay dependent

Note : Use 10µl of the suggested working dilution to label 10⁶ cells or 100µl whole blood.

Not tested in other applications.

Calculated MW	42 kDa. (Note)
Product Note	Epitope mapping indicates that clone MEM-M6/1 binds to an epitope within the distal Ig-like C-2 type domain

Properties

Form	Liquid
Buffer	PBS
Preservative	No preservatives
Storage	Store as concentrated solution. Centrifuge briefly prior to opening vial. For short-term storage (1-2 weeks), store at 4°C. For long-term storage, aliquot and store at -20°C or below. Avoid multiple freeze-thaw cycles.
Concentration	1 mg/ml (Please refer to the vial label for the specific concentration.)
Immunogen	CD147Rg, consisting of the cDNA coding for the extracellular region of human CD147.
Purification	Purified by hydrophobic charge induction chromatography
Conjugation	Unconjugated

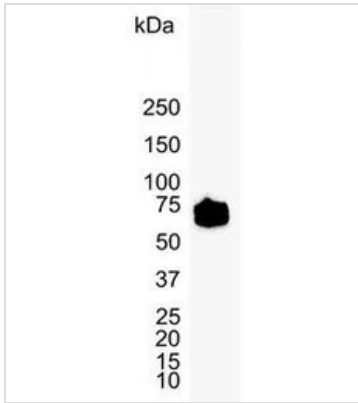


For full product information, images and publications, please visit our [website](#).

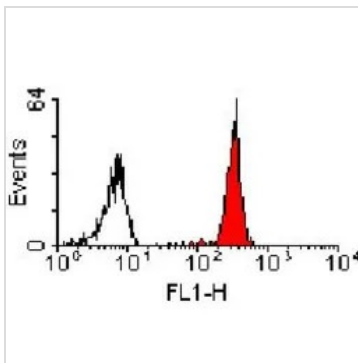
For laboratory research use only. Not for any clinical, therapeutic, or diagnostic use in humans or animals. Not for animal or human consumption.

Note

Purchasers shall not, and agree not to enable third parties to, analyze, copy, reverse engineer or otherwise attempt to determine the structure or sequence of the product.

DATA IMAGES

GTX75485 WB Image

WB analysis of HepG2 cell lysate using GTX75485 CD147 antibody [MEM-M6/1] (Azide free).


GTX75485 FCM Image

FACS analysis of human erythrocytes using GTX75485 CD147 antibody [MEM-M6/1] (Azide free).



For full product information, images and publications, please visit our [website](https://www.genetex.com).