

CD6 antibody [MEM-98] (PE)

Cat. No. GTX75498

Host	Mouse
Clonality	Monoclonal
Isotype	IgG1
Application	FACS
Reactivity	Human

Package
100 test

APPLICATION

Application Note

*Optimal dilutions/concentrations should be determined by the researcher.

Suggested dilution	Recommended dilution
FACS	20 µl reagent / 100 µl of whole blood or 10 ⁶ cells in a suspension
Not tested in other applications.	

Calculated MW 72 kDa. ([Note](#))

PROPERTIES

Form	Liquid
Buffer	PBS
Preservative	15mM Sodium azide
Storage	Store as concentrated solution. Centrifuge briefly prior to opening vial. Store at 4°C. DO NOT FREEZE. Protect from light.
Concentration	Batch dependent (Please refer to the vial label for the specific concentration.)
Immunogen	Human CD6 antigen purified by immunoaffinity chromatography from HBP-ALL cells followed by preparative SDS-PAGE of non-boiled non-reduced sample (excised piece of gel corresponding to the 100 kDa zone).
Purification	Purified by size-exclusion chromatography
Conjugation	Phycoerythrin (PE)

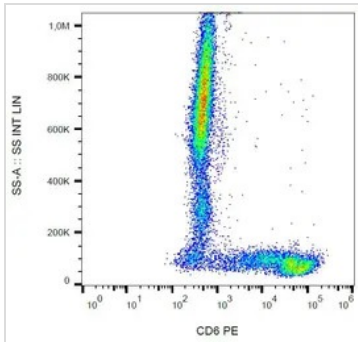
Note

For laboratory research use only. Not for any clinical, therapeutic, or diagnostic use in humans or animals. Not for animal or human consumption.

Purchasers shall not, and agree not to enable third parties to, analyze, copy, reverse engineer or otherwise attempt to determine the structure or sequence of the product.



For full product information, images and publications, please visit our [website](#).

DATA IMAGES

GTX75498 FACS Image

FACS analysis of human peripheral blood using GTX75498 CD6 antibody [MEM-98] (PE).



For full product information, images and publications, please visit our [website](https://www.genetex.com).