

CD19 antibody [LT19] (PE)

Cat. No. GTX75601

Host	Mouse
Clonality	Monoclonal
Isotype	IgG1
Applications	FCM
Reactivity	Human

References (1)
Package
1 ml

Applications

Application Note

*Optimal dilutions/concentrations should be determined by the researcher.

Suggested dilution	Recommended dilution
FCM	Neat

Note : Use 10 μ l of the suggested working dilution to label 10⁶ cells or 100 μ l whole blood.

Not tested in other applications.

Properties

Form	Liquid
Buffer	PBS, 1% BSA
Preservative	0.09% Sodium azide
Storage	Store as concentrated solution. Centrifuge briefly prior to opening vial. Store at 4°C. DO NOT FREEZE. Protect from light.
Concentration	Batch dependent (Please refer to the vial label for the specific concentration.)
Purification	Purified by ion exchange chromatography
Conjugation	Phycoerythrin (PE) Wavelength

Note

For laboratory research use only. Not for any clinical, therapeutic, or diagnostic use in humans or animals. Not for animal or human consumption.

Purchasers shall not, and agree not to enable third parties to, analyze, copy, reverse engineer or otherwise attempt to determine the structure or sequence of the product.



For full product information, images and publications, please visit our [website](#).

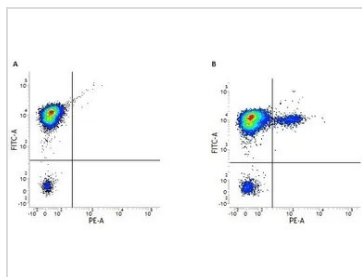
DATA IMAGES

GTX75601 FCM Image

Figure A. FITC conjugated Rat anti Human CD18 (GTX76237) and RPE conjugated Mouse IgG1 isotype control (GTX76639). Figure B. FITC conjugated Rat anti Human CD18 (GTX76237) and RPE conjugated Mouse anti Human CD19 (GTX75601). All experiments performed on human Peripheral blood lymphocytes



For full product information, images and publications, please visit our [website](https://www.genetex.com).