

# Integrin beta 1 / CD29 antibody [4B7R] (PE)

**Cat. No. GTX75618**

<b>Host</b>	Mouse
<b>Clonality</b>	Monoclonal
<b>Isotype</b>	IgG1
<b>Applications</b>	FCM
<b>Reactivity</b>	Human

References ( 3 )  
Package  
100 test

## Applications

### Application Note

\*Optimal dilutions/concentrations should be determined by the researcher.

Suggested dilution	Recommended dilution
FCM	Neat-1/2

**Note : Use 10µl of the suggested working dilution to label 10<sup>6</sup> cells in 100µl.**

Not tested in other applications.

## Properties

<b>Form</b>	Liquid
<b>Buffer</b>	PBS, 1% BSA, 5% Sucrose
<b>Preservative</b>	0.09% Sodium azide
<b>Storage</b>	Store as concentrated solution. Centrifuge briefly prior to opening vial. Store at 4°C. DO NOT FREEZE. Protect from light.
<b>Concentration</b>	Batch dependent (Please refer to the vial label for the specific concentration.)
<b>Immunogen</b>	Ocular melanoma cell line V+B2.
<b>Purification</b>	Protein G purified From tissue culture supernatant
<b>Conjugation</b>	Phycoerythrin (PE) <a href="#">Wavelength</a>

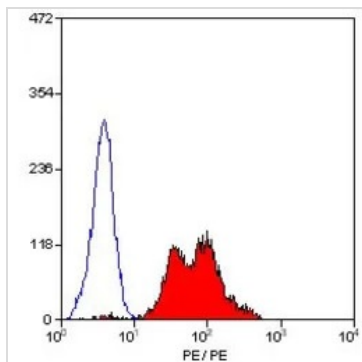
### Note

For laboratory research use only. Not for any clinical, therapeutic, or diagnostic use in humans or animals. Not for animal or human consumption.

Purchasers shall not, and agree not to enable third parties to, analyze, copy, reverse engineer or otherwise attempt to determine the structure or sequence of the product.



For full product information, images and publications, please visit our [website](#).

**DATA IMAGES**

**GTX75618 FCM Image**

FACS analysis of human peripheral blood lymphocytes using GTX75618 Integrin beta 1 / CD29 antibody [4B7R] (PE).



For full product information, images and publications, please visit our [website](https://www.genetex.com).