

LRP1 antibody [A2Mr alpha-2]

Cat. No. GTX75655

Host	Mouse
Clonality	Monoclonal
Isotype	IgG1
Applications	WB, ICC/IF, IHC-Fr, FCM, IP, ELISA
Reactivity	Human

Package
200 µg

Applications

Application Note

*Optimal dilutions/concentrations should be determined by the researcher.

Suggested dilution	Recommended dilution
WB	Assay dependent
ICC/IF	Assay dependent
IHC-Fr	Assay dependent
FCM	1/50-1/100
IP	Assay dependent
ELISA	Assay dependent

Note : Use 10µl of the suggested working dilution to label 10⁶ cells in 100µl.

Not tested in other applications.

Calculated MW 505 kDa. ([Note](#))

Product Note This antibody detects an epitope within the LRP515 chain of LRP1 (CD91).

Properties

Form	Liquid
Buffer	PBS
Preservative	0.09% Sodium azide
Storage	Store as concentrated solution. Centrifuge briefly prior to opening vial. For short-term storage (1-2 weeks), store at 4°C. For long-term storage, aliquot and store at -20°C or below. Avoid multiple freeze-thaw cycles.
Concentration	1.0 mg/ml (Please refer to the vial label for the specific concentration.)
Immunogen	Purified LRP1
Purification	Protein G purified From tissue culture supernatant



For full product information, images and publications, please visit our [website](#).

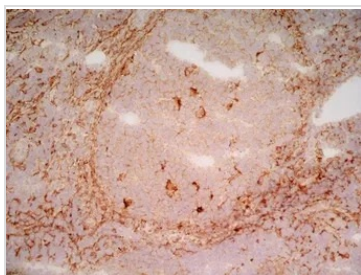
Conjugation

Unconjugated

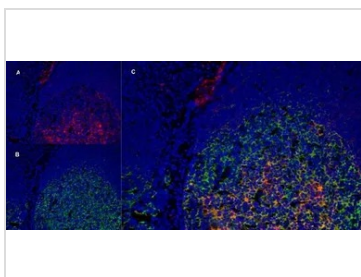
Note

For laboratory research use only. Not for any clinical, therapeutic, or diagnostic use in humans or animals. Not for animal or human consumption.

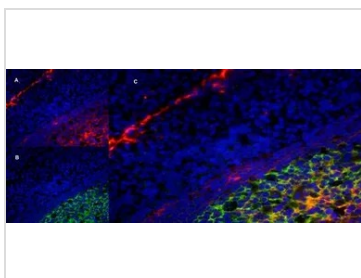
Purchasers shall not, and agree not to enable third parties to, analyze, copy, reverse engineer or otherwise attempt to determine the structure or sequence of the product.

DATA IMAGES

GTX75655 IHC-Fr Image

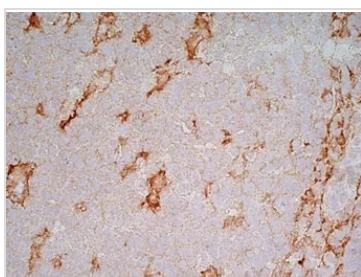
IHC-Fr analysis of human tonsil tissue using GTX75655 LRP1 antibody [A2Mr alpha-2].


GTX75655 IHC-Fr Image

IHC-Fr analysis of human tonsil tissue using GTX75655 LRP1 antibody, red in A and Mouse anti Human CD21, clone LB21 GTX74728, green in B. C is the merged image with nuclei counterstained blue using DAPI.


GTX75655 IHC-Fr Image

IHC-Fr analysis of human tonsil tissue using GTX75655 LRP1 antibody, red in A and Mouse anti Human CD21, clone LB21 GTX74728, green in B. C is the merged image with nuclei counterstained blue using DAPI.


GTX75655 IHC-Fr Image

IHC-Fr analysis of human tonsil tissue using GTX75655 LRP1 antibody [A2Mr alpha-2].



For full product information, images and publications, please visit our [website](https://www.genetex.com).