

## CDK6 antibody [DCS 83.1]

Cat. No. GTX75692

Host	Mouse
Clonality	Monoclonal
Isotype	IgG1
Application	WB, IHC-Fr, IP
Reactivity	Human

Package

50 µg

## APPLICATION

## Application Note

\*Optimal dilutions/concentrations should be determined by the researcher.

Suggested dilution	Recommended dilution
WB	Assay dependent
IHC-Fr	Assay dependent
IP	Assay dependent

Not tested in other applications.

Calculated MW 37 kDa. ( [Note](#) )

## PROPERTIES

Form	Liquid
Buffer	PBS
Preservative	0.08% Sodium azide
Storage	Store as concentrated solution. Centrifuge briefly prior to opening vial. For short-term storage (1-2 weeks), store at 4°C. For long-term storage, aliquot and store at -20°C or below. Avoid multiple freeze-thaw cycles.
Concentration	1.0 mg/ml (Please refer to the vial label for the specific concentration.)
Immunogen	Recombinant cdk6 protein
Purification	Protein A purified
Conjugation	Unconjugated

## Note

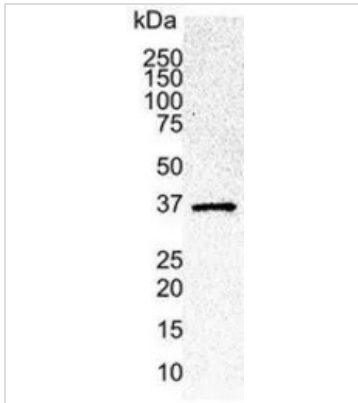
For laboratory research use only. Not for any clinical, therapeutic, or diagnostic use in humans or animals. Not for animal or human consumption.

Purchasers shall not, and agree not to enable third parties to, analyze, copy, reverse engineer or otherwise attempt to determine the structure or sequence of the product.



For full product information, images and publications, please visit our [website](#).

## DATA IMAGES



### GTX75692 WB Image

WB analysis of MOLT4 cell lysate using GTX75692 CDK6 antibody [DCS 83.1].



For full product information, images and publications, please visit our [website](https://www.genetex.com).