

Integrin alpha 2 antibody [16B4]

Cat. No. GTX75705

Host	Mouse
Clonality	Monoclonal
Isotype	IgG1
Applications	WB, ICC/IF, IHC-P, IHC-Fr, FCM, IP, ELISA, Functional Assay
Reactivity	Human

References (1)

Package

200 µg

Applications

Application Note

*Optimal dilutions/concentrations should be determined by the researcher.

Suggested dilution	Recommended dilution
WB	Assay dependent
ICC/IF	Assay dependent
IHC-P	Assay dependent
IHC-Fr	30-40µg/ml
FCM	30µg/ml
IP	25-50µg/ml
ELISA	10µg/ml
Functional Assay	Assay dependent

Note : Use 10µl of the suggested working dilution to label 10⁶ cells in 100µl.

Not tested in other applications.

Calculated MW	129 kDa. (Note)
Product Note	This antibody recognizes human Integrin alpha 2.

Properties

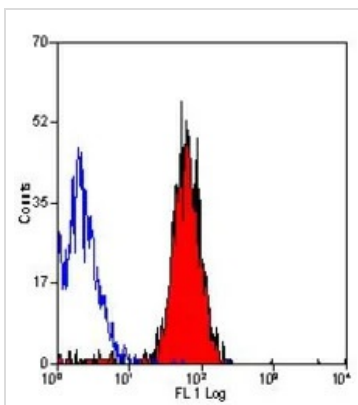
Form	Liquid
Buffer	PBS
Preservative	0.09% Sodium azide
Storage	Store as concentrated solution. Centrifuge briefly prior to opening vial. For short-term storage (1-2 weeks), store at 4°C. For long-term storage, aliquot and store at -20°C or below. Avoid multiple freeze-thaw cycles.
Concentration	1.0 mg/ml (Please refer to the vial label for the specific concentration.)



For full product information, images and publications, please visit our [website](#).

Immunogen	Purified human beta 1 preparation from HT1080 fibrosarcoma cell extract.
Purification	Protein G purified From tissue culture supernatant
Conjugation	Unconjugated
Note	For laboratory research use only. Not for any clinical, therapeutic, or diagnostic use in humans or animals. Not for animal or human consumption. Purchasers shall not, and agree not to enable third parties to, analyze, copy, reverse engineer or otherwise attempt to determine the structure or sequence of the product.

DATA IMAGES



GTX75705 FCM Image

FACS analysis of human peripheral blood platelets using GTX75705 Integrin alpha 2 antibody [16B4].



For full product information, images and publications, please visit our [website](https://www.genetex.com).