

Integrin beta 1 / CD29 antibody [12G10]

Cat. No. GTX75707

Host	Mouse
Clonality	Monoclonal
Isotype	IgG1
Applications	WB, ICC/IF, IHC-Fr, FCM, IP, ELISA
Reactivity	Human, Mink

Package
200 µg

Applications

Application Note

*Optimal dilutions/concentrations should be determined by the researcher.

Suggested dilution	Recommended dilution
WB	Assay dependent
ICC/IF	Assay dependent
IHC-Fr	Assay dependent
FCM	1/25-1/50
IP	Assay dependent
ELISA	10µg/ml

Note : Use 10µl of the suggested working dilution to label 10⁶ cells in 100µl.

Not tested in other applications.

Calculated MW 88 kDa. ([Note](#))

Properties

Form	Liquid
Buffer	PBS
Preservative	0.09% Sodium azide
Storage	Store as concentrated solution. Centrifuge briefly prior to opening vial. For short-term storage (1-2 weeks), store at 4°C. For long-term storage, aliquot and store at -20°C or below. Avoid multiple freeze-thaw cycles.
Concentration	1.0 mg/ml (Please refer to the vial label for the specific concentration.)
Immunogen	Purified human beta1 integrin preparation from HT1080 fibrosarcoma cell extract.
Purification	Protein G purified From tissue culture supernatant
Conjugation	Unconjugated

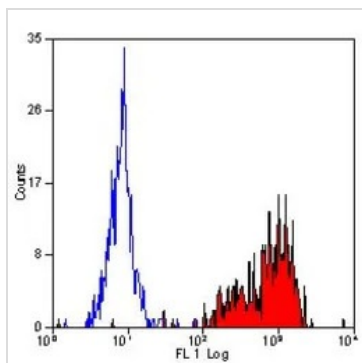


For full product information, images and publications, please visit our [website](#).

For laboratory research use only. Not for any clinical, therapeutic, or diagnostic use in humans or animals. Not for animal or human consumption.

Note

Purchasers shall not, and agree not to enable third parties to, analyze, copy, reverse engineer or otherwise attempt to determine the structure or sequence of the product.

DATA IMAGES

GTX75707 FCM Image

FACS analysis of human peripheral blood monocytes using GTX75707 Integrin beta 1 / CD29 antibody [12G10].



For full product information, images and publications, please visit our [website](#).