

CD18 antibody [MEM-148]

Cat. No. GTX75788

Host	Mouse
Clonality	Monoclonal
Isotype	IgG1
Applications	WB, FCM, IP, Functional Assay
Reactivity	Human

References (1)

Package

200 µg

Applications

Application Note

*Optimal dilutions/concentrations should be determined by the researcher.

Suggested dilution	Recommended dilution
WB	Assay dependent
FCM	Assay dependent
IP	Assay dependent
Functional Assay	Assay dependent

Not tested in other applications.

Calculated MW 85 kDa. ([Note](#))

Product Note This antibody recognizes an epitope on the human CD18 molecule that is hidden in the CD11/CD18 heterodimer on resting cells.

Properties

Form	Liquid
Buffer	PBS
Preservative	0.09% Sodium azide
Storage	Store as concentrated solution. Centrifuge briefly prior to opening vial. For short-term storage (1-2 weeks), store at 4°C. For long-term storage, aliquot and store at -20°C or below. Avoid multiple freeze-thaw cycles.
Concentration	1.0 mg/ml (Please refer to the vial label for the specific concentration.)
Immunogen	Peripheral blood mononuclear cells.
Purification	Protein G purified
Conjugation	Unconjugated

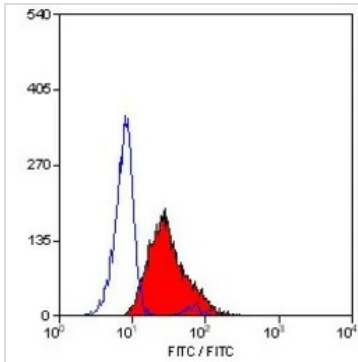


For full product information, images and publications, please visit our [website](#).

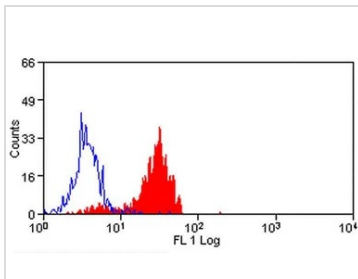
For laboratory research use only. Not for any clinical, therapeutic, or diagnostic use in humans or animals. Not for animal or human consumption.

Note

Purchasers shall not, and agree not to enable third parties to, analyze, copy, reverse engineer or otherwise attempt to determine the structure or sequence of the product.

DATA IMAGES

GTX75788 FCM Image

FACS analysis of human peripheral blood granulocytes using GTX75788 CD18 antibody [MEM-148].


GTX75788 FCM Image

FACS analysis of human peripheral blood monocytes using GTX75788 CD18 antibody [MEM-148].



For full product information, images and publications, please visit our [website](#).