

## CD18 antibody [MEM-148] (PE)

Cat. No. GTX75791

<b>Host</b>	Mouse
<b>Clonality</b>	Monoclonal
<b>Isotype</b>	IgG1
<b>Applications</b>	FCM
<b>Reactivity</b>	Human

References ( 1 )  
 Package  
 100 test

## Applications

## Application Note

\*Optimal dilutions/concentrations should be determined by the researcher.

Suggested dilution	Recommended dilution
FCM	20 µl reagent / 100 µl of whole blood or 10 <sup>6</sup> cells in a suspension

**Note : Do not need a permeabilization step.**

Not tested in other applications.

## Product Note

This antibody recognizes an epitope on CD18 which is essentially inaccessible in intact integrin molecules on resting leukocytes, but is exposed on high-affinity state of LFA-1 or on unassociated CD18. We do not recommend use of this product for Pig samples.

## Properties

<b>Form</b>	Liquid
<b>Buffer</b>	PBS
<b>Preservative</b>	15mM Sodium azide
<b>Storage</b>	Store as concentrated solution. Centrifuge briefly prior to opening vial. Store at 4°C. DO NOT FREEZE. Protect from light.
<b>Concentration</b>	Batch dependent (Please refer to the vial label for the specific concentration.)
<b>Immunogen</b>	Peripheral blood mononuclear cells
<b>Purification</b>	Purified by size-exclusion chromatography
<b>Conjugation</b>	Phycoerythrin (PE) <a href="#">Wavelength</a>

## Note

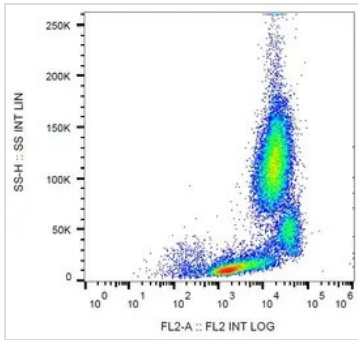
For laboratory research use only. Not for any clinical, therapeutic, or diagnostic use in humans or animals. Not for animal or human consumption.

Purchasers shall not, and agree not to enable third parties to, analyze, copy, reverse engineer or otherwise attempt to determine the structure or sequence of the product.



For full product information, images and publications, please visit our [website](#).

## DATA IMAGES

**GTX75791 FCM Image**

FACS analysis of human peripheral blood using GTX75791 CD18 antibody [MEM-148] (PE).



For full product information, images and publications, please visit our [website](#).