

HLA-A2 antibody [BB7.2] (FITC)

Cat. No. GTX75804

Host	Mouse
Clonality	Monoclonal
Isotype	IgG2b
Applications	FCM
Reactivity	Human

References (5)

Package

50 µg

Applications

Application Note

*Optimal dilutions/concentrations should be determined by the researcher.

Suggested dilution	Recommended dilution
FCM	Neat-1/10

Note : Use 10µl of the suggested working dilution to label 10⁶ cells or 100µl whole blood.

Not tested in other applications.

Product Note

The epitope recognized by this antibody has been studied extensively and would appear to include the carboxy-terminus of the alpha-2 helix and a turn on one of the underlying beta strands.

Properties

Form	Liquid
Buffer	PBS, 1% BSA
Preservative	0.09% Sodium azide
Storage	Store as concentrated solution. Centrifuge briefly prior to opening vial. For short-term storage (1-2 weeks), store at 4°C. For long-term storage, aliquot and store at -20°C or below. Avoid multiple freeze-thaw cycles. Protect from light.
Concentration	0.1 mg/ml (Please refer to the vial label for the specific concentration.)
Immunogen	Papain solubilised HLA-A2
Purification	Protein A purified From tissue culture supernatant
Conjugation	Fluorescein isothiocyanate (FITC) Wavelength

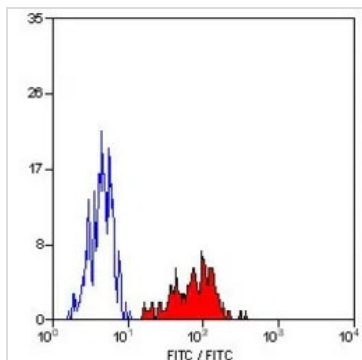
Note

For laboratory research use only. Not for any clinical, therapeutic, or diagnostic use in humans or animals. Not for animal or human consumption.

Purchasers shall not, and agree not to enable third parties to, analyze, copy, reverse engineer or otherwise attempt to determine the structure or sequence of the product.



For full product information, images and publications, please visit our [website](#).

DATA IMAGES

GTX75804 FCM Image

FACS analysis of human peripheral blood monocytes using GTX75804 HLA-A2 antibody [BB7.2] (FITC).



For full product information, images and publications, please visit our [website](#).