

## HLA-A2 antibody [BB7.2] (Low endotoxin, azide free)

**Cat. No. GTX75806**

<b>Host</b>	Mouse
<b>Clonality</b>	Monoclonal
<b>Isotype</b>	IgG2b
<b>Applications</b>	ICC/IF, IHC-Fr, FCM, IP, Blocking, Neutralizing/Inhibition
<b>Reactivity</b>	Human

References ( 4 )

Package

500 µg

## Applications

**Application Note**

\*Optimal dilutions/concentrations should be determined by the researcher.

Suggested dilution	Recommended dilution
ICC/IF	Assay dependent
IHC-Fr	Assay dependent
FCM	10µg/ml
IP	Assay dependent
Blocking	Assay dependent
Neutralizing/Inhibition	Assay dependent

**Note : Use 10µl of the suggested working dilution to label 10<sup>6</sup> cells or 100µl whole blood.****Functionally Mouse anti Human HLA A2 antibody, clone BB7.2 is reported to inhibit MHC restricted cellular cytotoxicity.**

Not tested in other applications.

**Product Note**

The epitope recognized by this antibody has been studied extensively and would appear to include the carboxy-terminus of the alpha-2 helix and a turn on one of the underlying beta strands. Clone BB7.2 is reported to inhibit MHC restricted cellular cytotoxicity..

## Properties

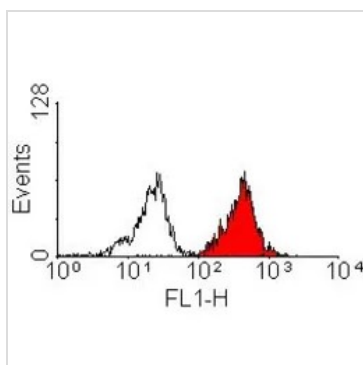
<b>Form</b>	Liquid
<b>Buffer</b>	PBS
<b>Preservative</b>	No preservatives
<b>Storage</b>	Store as concentrated solution. Centrifuge briefly prior to opening vial. For short-term storage (1-2 weeks), store at 4°C. For long-term storage, aliquot and store at -20°C or below. Avoid multiple freeze-thaw cycles.
<b>Concentration</b>	1.0 mg/ml (Please refer to the vial label for the specific concentration.)
<b>Immunogen</b>	Papain solubilised HLA-A2



For full product information, images and publications, please visit our [website](#).

<b>Purification</b>	Protein A purified From tissue culture supernatant
<b>Endotoxin</b>	< 0.01 EU/μg (determined by the LAL assay)
<b>Conjugation</b>	Unconjugated
<b>Note</b>	For laboratory research use only. Not for any clinical, therapeutic, or diagnostic use in humans or animals. Not for animal or human consumption.  Purchasers shall not, and agree not to enable third parties to, analyze, copy, reverse engineer or otherwise attempt to determine the structure or sequence of the product.

## DATA IMAGES



### GTX75806 FCM Image

FACS analysis of human peripheral blood lymphocytes using GTX75806 HLA-A2 antibody [BB7.2] (Low endotoxin, azide free).



For full product information, images and publications, please visit our [website](https://www.genetex.com).