

CD46 antibody [MEM-258] (PE)

Cat. No. GTX75835

Host	Mouse
Clonality	Monoclonal
Isotype	IgG1
Application	FACS
Reactivity	Human

Reference (2)

Package

1 ml

APPLICATION

Application Note

*Optimal dilutions/concentrations should be determined by the researcher.

Suggested dilution	Recommended dilution
FACS	Neat

Note : Use 10 μ l of the suggested working dilution to label 10⁶ cells or 100 μ l whole blood.

Not tested in other applications.

Calculated MW 44 kDa. ([Note](#))

PROPERTIES

Form	Liquid
Buffer	PBS, 1% BSA
Preservative	0.09% Sodium azide
Storage	Store as concentrated solution. Centrifuge briefly prior to opening vial. Store at 4°C. DO NOT FREEZE. Protect from light.
Concentration	Batch dependent (Please refer to the vial label for the specific concentration.)
Immunogen	HPB-ALL cell line.
Purification	Protein A purified
Conjugation	Phycoerythrin (PE)

Note

For laboratory research use only. Not for any clinical, therapeutic, or diagnostic use in humans or animals. Not for animal or human consumption.

Purchasers shall not, and agree not to enable third parties to, analyze, copy, reverse engineer or otherwise attempt to determine the structure or sequence of the product.



For full product information, images and publications, please visit our [website](#).

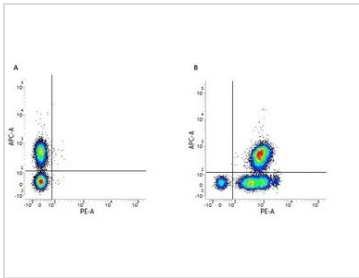
DATA IMAGES

GTX75835 FACS Image

Figure A. APC conjugated Mouse anti Human CD3 (GTX76164) and RPE conjugated Mouse IgG1 isotype control (GTX76639). Figure B. APC conjugated Mouse anti Human CD3 (GTX76164) and RPE conjugated Mouse anti Human CD46 (GTX75835). All experiments performed on human Peripheral blood lymphocytes



For full product information, images and publications, please visit our [website](https://www.genetex.com).