

## Granzyme B antibody [GB10] (Biotin)

**Cat. No. GTX75842**

<b>Host</b>	Mouse
<b>Clonality</b>	Monoclonal
<b>Isotype</b>	IgG1
<b>Applications</b>	ELISA
<b>Reactivity</b>	Human, Chimpanzee

**Package**  
50 µg

## Applications

**Application Note**

\*Optimal dilutions/concentrations should be determined by the researcher.

Suggested dilution	Recommended dilution
ELISA	1 µg/ml

Not tested in other applications.

## Properties

<b>Form</b>	Liquid
<b>Buffer</b>	TBS, 1% BSA
<b>Preservative</b>	0.001% Thimerosal
<b>Storage</b>	Store as concentrated solution. Centrifuge briefly prior to opening vial. For short-term storage (1-2 weeks), store at 4°C. For long-term storage, aliquot and store at -20°C or below. Avoid multiple freeze-thaw cycles.
<b>Concentration</b>	0.5 mg/ml (Please refer to the vial label for the specific concentration.)
<b>Immunogen</b>	Purified human Granzyme B.
<b>Purification</b>	Protein A purified From tissue culture supernatant
<b>Conjugation</b>	Biotin

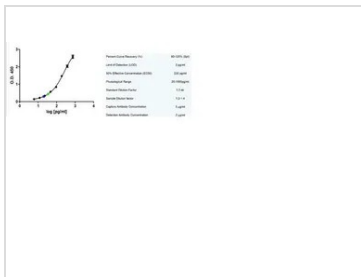
**Note**

For laboratory research use only. Not for any clinical, therapeutic, or diagnostic use in humans or animals. Not for animal or human consumption.

Purchasers shall not, and agree not to enable third parties to, analyze, copy, reverse engineer or otherwise attempt to determine the structure or sequence of the product.



For full product information, images and publications, please visit our [website](#).

**DATA IMAGES**

**GTX75842 ELISA Image**

Sandwich ELISA analysis of human granzyme B using Mouse anti Human granzyme B (GTX75843) as a capture reagent and biotinylated Mouse anti Human granzyme B (GTX75842) as a detection reagent. Human plasma samples are diluted 1:2 (green) and 1:4 (blue).



For full product information, images and publications, please visit our [website](#).