

## Granzyme B antibody [GB11]

Cat. No. GTX75843

<b>Host</b>	Mouse
<b>Clonality</b>	Monoclonal
<b>Isotype</b>	IgG1
<b>Applications</b>	ICC/IF, IHC-Fr, FCM, IP, ELISA
<b>Reactivity</b>	Human, Monkey, Chimpanzee

References ( 3 )

Package

50 µg

## Applications

## Application Note

\*Optimal dilutions/concentrations should be determined by the researcher.

Suggested dilution	Recommended dilution
ICC/IF	Assay dependent
IHC-Fr	Assay dependent
FCM	1/10-1/100
IP	Assay dependent
ELISA	2-5µg/ml

**Note : Use 10µl of the suggested working dilution to label 10<sup>6</sup> cells or 100µl whole blood.**

Not tested in other applications.

## Product Note

This antibody has been reported to function as a capture reagent in sandwich ELISA assays for soluble Granzyme B in conjunction with biotin conjugated GB10 (GTX75842) as detection reagent.

## Properties

<b>Form</b>	Liquid
<b>Buffer</b>	TBS
<b>Preservative</b>	0.09% Sodium azide
<b>Storage</b>	Store as concentrated solution. Centrifuge briefly prior to opening vial. For short-term storage (1-2 weeks), store at 4°C. For long-term storage, aliquot and store at -20°C or below. Avoid multiple freeze-thaw cycles.
<b>Concentration</b>	1.0 mg/ml (Please refer to the vial label for the specific concentration.)
<b>Immunogen</b>	Purified human Granzyme B.
<b>Purification</b>	Protein A purified From tissue culture supernatant
<b>Conjugation</b>	Unconjugated

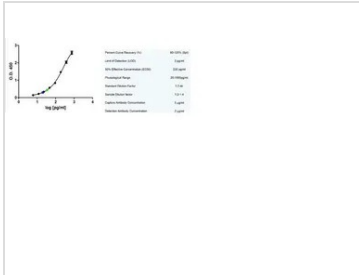


For full product information, images and publications, please visit our [website](#).

For laboratory research use only. Not for any clinical, therapeutic, or diagnostic use in humans or animals. Not for animal or human consumption.

**Note**  
 Purchasers shall not, and agree not to enable third parties to, analyze, copy, reverse engineer or otherwise attempt to determine the structure or sequence of the product.

DATA IMAGES



**GTX75843 ELISA Image**

Sandwich ELISA analysis of human granzyme B using Mouse anti Human granzyme B (GTX75843) as a capture reagent and biotinylated Mouse anti Human granzyme B (GTX75842) as a detection reagent. Human plasma samples are diluted 1:2 (green) and 1:4 (blue).



For full product information, images and publications, please visit our [website](#).