

IL2 Receptor alpha antibody [MEM-181]

Cat. No. GTX75869

Host	Mouse
Clonality	Monoclonal
Isotype	IgG1
Applications	FCM
Reactivity	Human

Package
100 µg

Applications

Application Note

*Optimal dilutions/concentrations should be determined by the researcher.

Suggested dilution	Recommended dilution
FCM	Assay dependent

Not tested in other applications.

Properties

Form	Liquid
Buffer	PBS
Preservative	15mM Sodium azide
Storage	Store as concentrated solution. Centrifuge briefly prior to opening vial. Store at 4°C. DO NOT FREEZE.
Concentration	1 mg/ml (Please refer to the vial label for the specific concentration.)
Immunogen	PHA-activated peripheral blood leucocytes
Purification	Protein A purified
Conjugation	Unconjugated

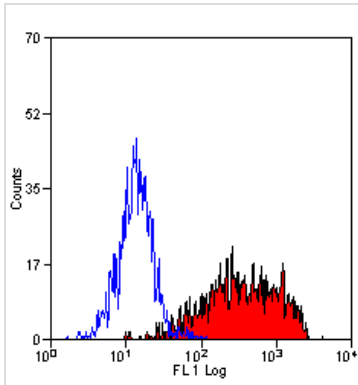
Note

For laboratory research use only. Not for any clinical, therapeutic, or diagnostic use in humans or animals. Not for animal or human consumption.

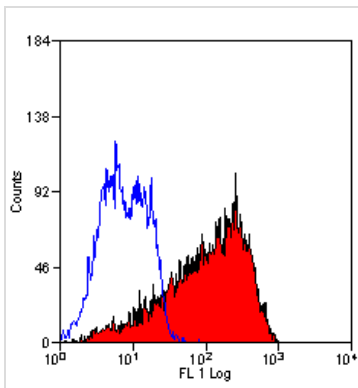
Purchasers shall not, and agree not to enable third parties to, analyze, copy, reverse engineer or otherwise attempt to determine the structure or sequence of the product.



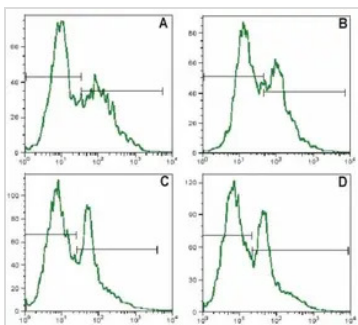
For full product information, images and publications, please visit our [website](#).

DATA IMAGES

GTX75869 FCM Image

Staining of PHA stimulated human lymphocyte cells with Mouse anti Human CD25 (GTX75869)


GTX75869 FCM Image

Staining of PHA stimulated human peripheral blood lymphocytes with Mouse anti Human CD25:FITC (GTX18275)


GTX75869 FCM Image

Surface staining of human PBMC with anti-human CD25: FITC (GTX75869). The mononuclear cells were isolated from human peripheral blood, divided in aliquots for duplicate analysis and stimulated with PHA for 2 days.

Panel A, C – staining with anti-human CD25 (MEM-181) (GTX75869)

Panel B, D – staining with a standard anti-CD25 monoclonal antibody



For full product information, images and publications, please visit our [website](https://www.genetex.com).